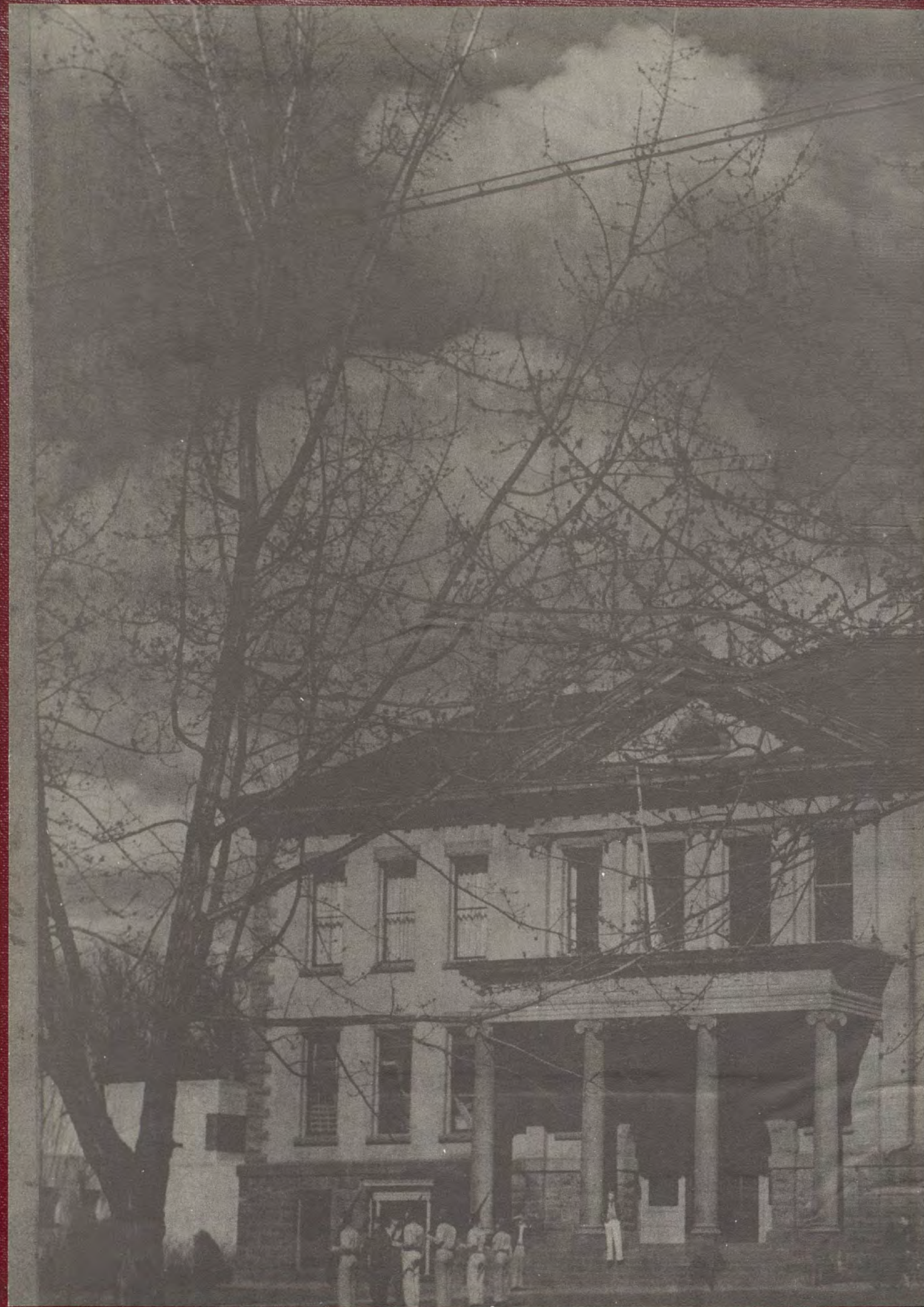
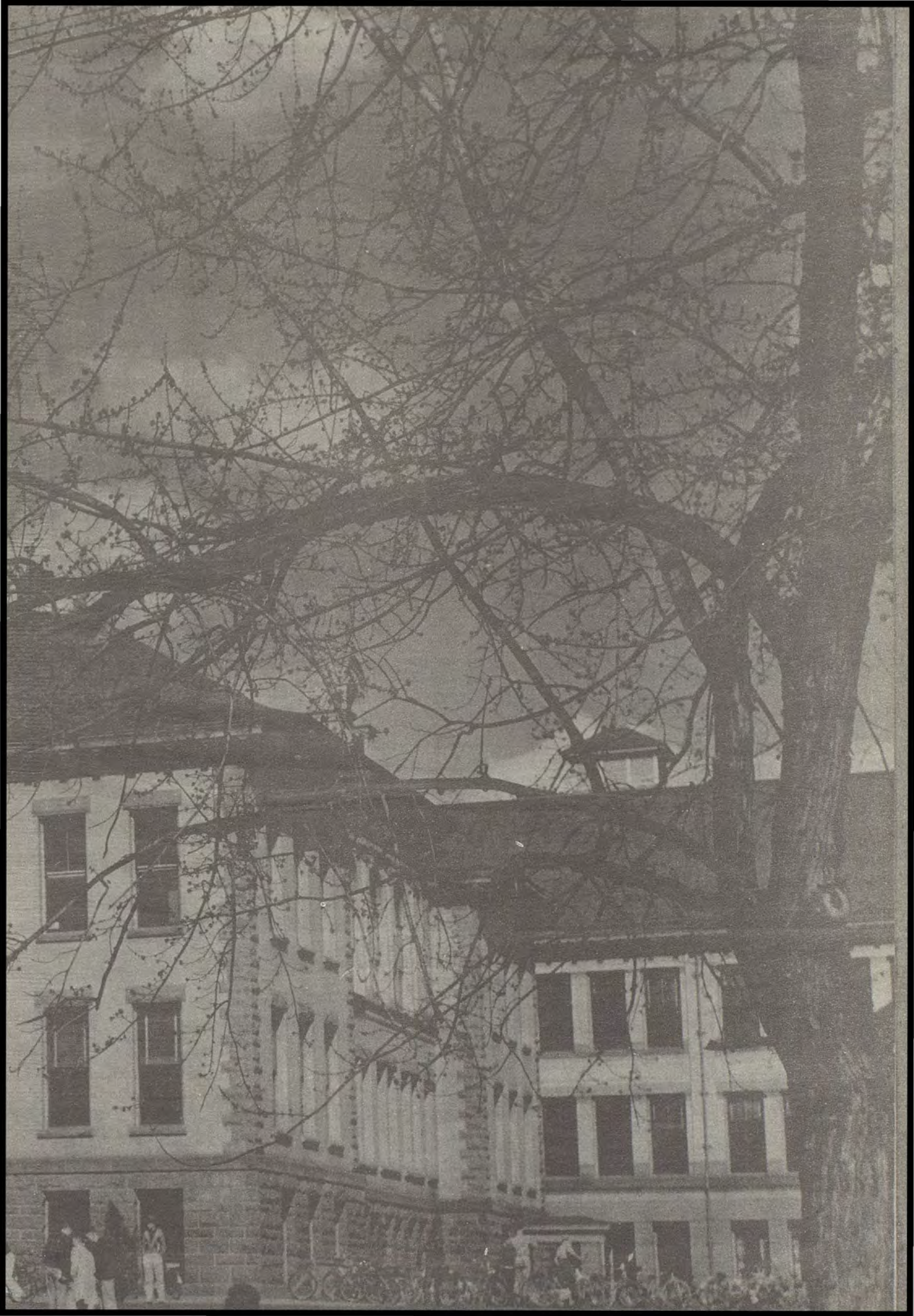
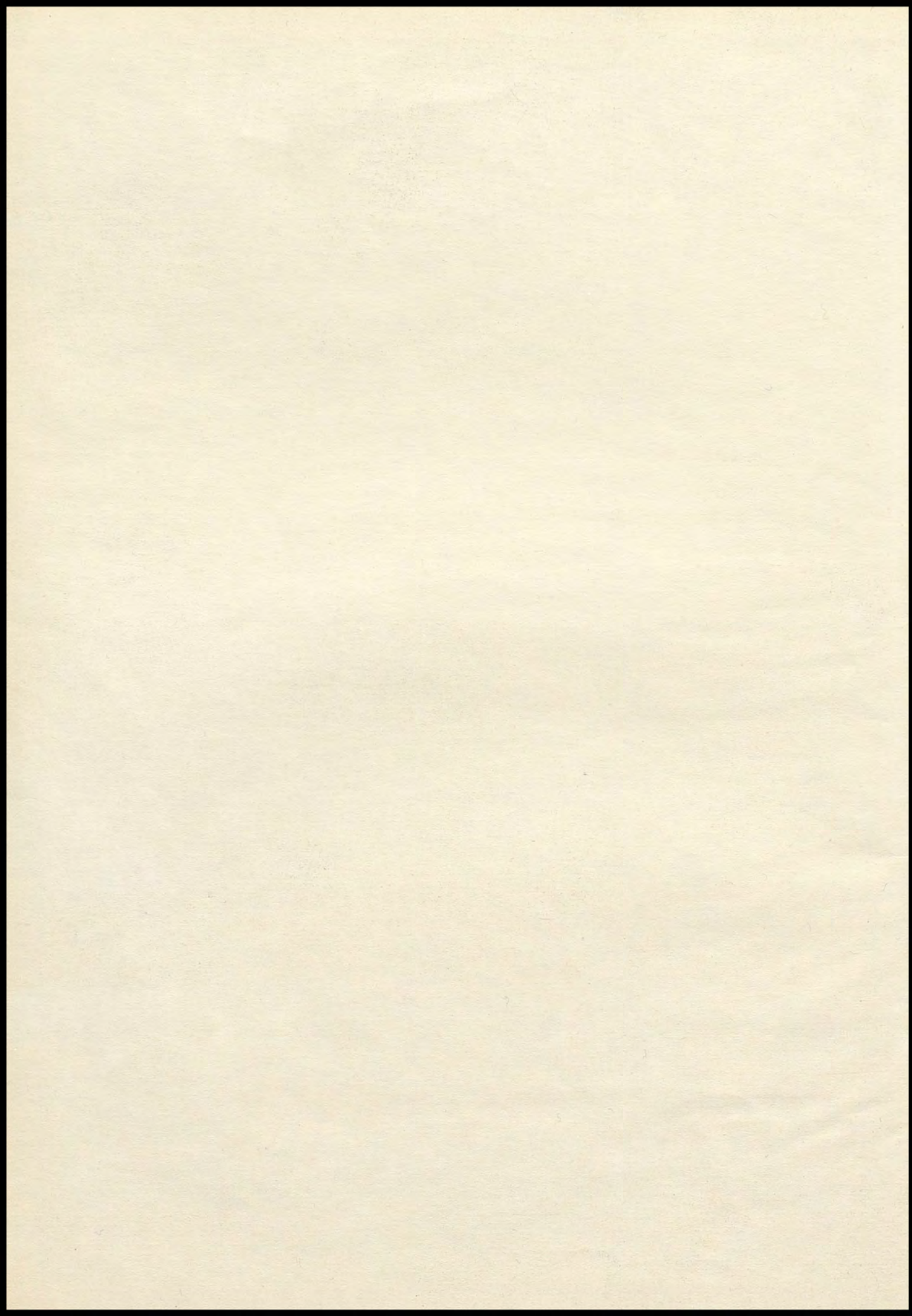


1 9 4 2

ROYAL BLUE



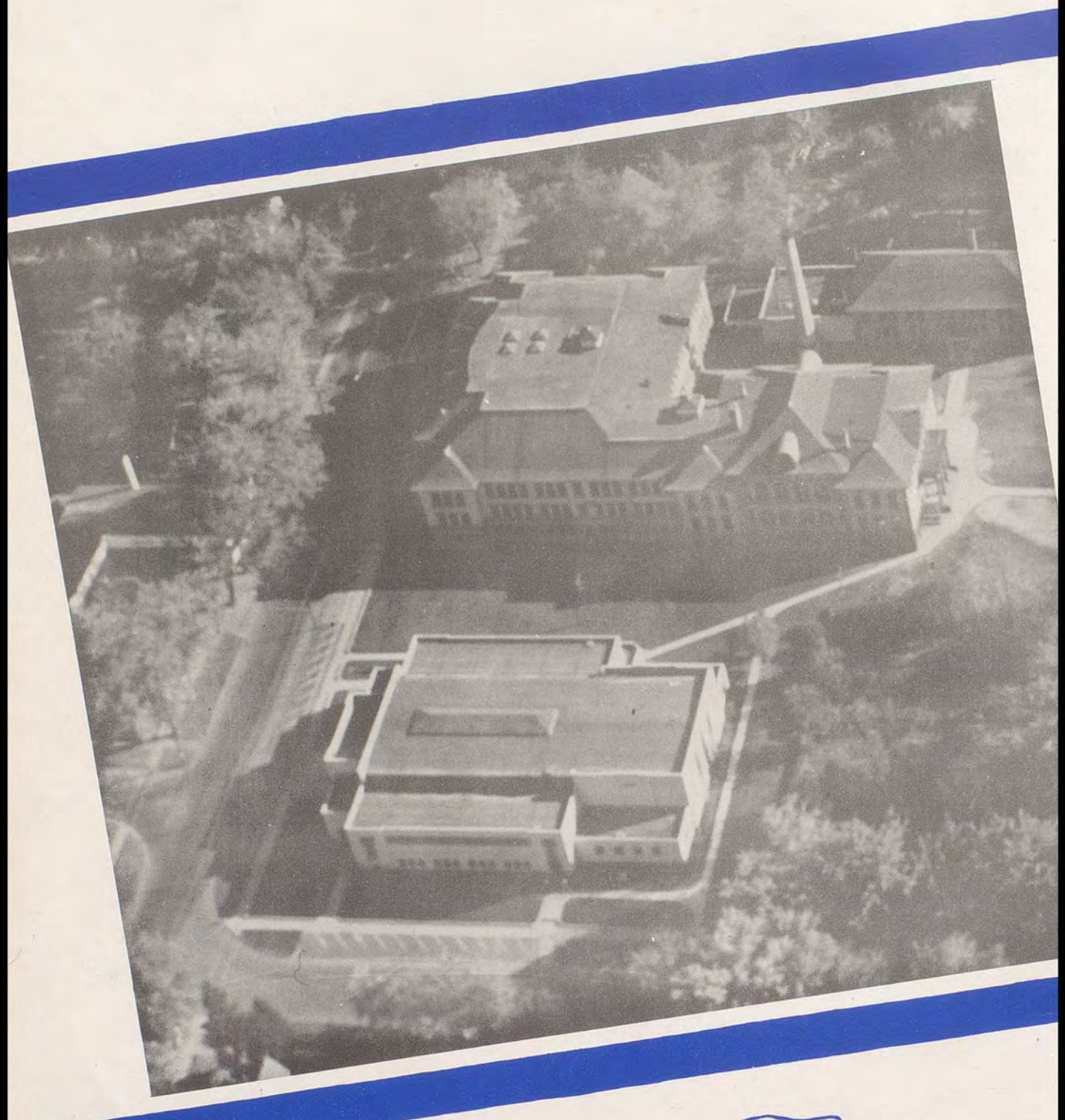






1942

Royal Blue





1942

Royal Blue

PUBLISHED BY STUDENTS OF
WALLA WALLA HIGH SCHOOL ★

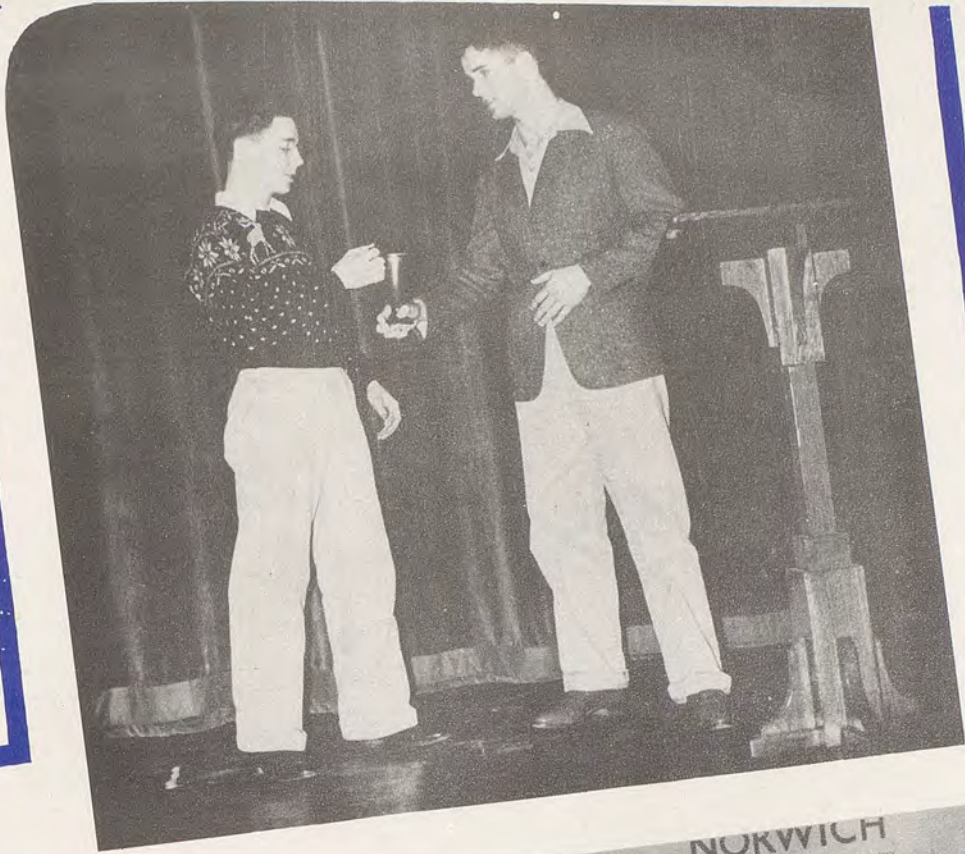
Editor

Ruth Maryde Fahey

Foreword

Through the medium of word and picture, your Royal Blue presents a tangible record of the activities and achievements of the past school year.



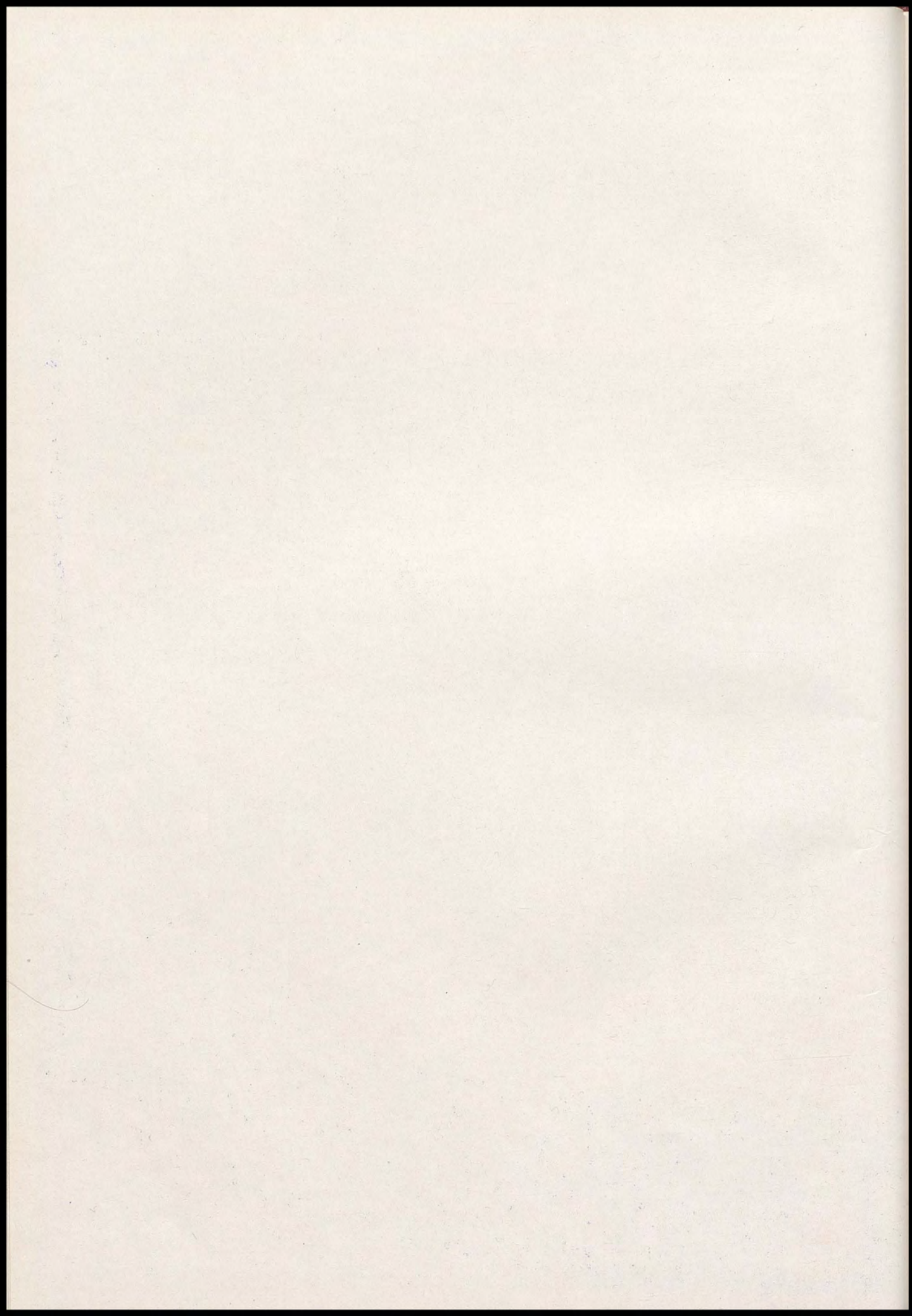


Roll





Call



THE "BOSS MEN"



More than a hundred technically trained foremen . . . nearly three thousand workers . . . several hundred thousand dollars' worth of property . . . What is this, a great manufacturing establishment? Who is the "boss", a big business tycoon?

No, this great establishment is the public school system of Walla Walla, and the "boss" is the city superintendent of schools. And the product is not guns nor butter, but human personality. And upon the success of this production job depends pretty largely the kind of Walla Walla the future, immediate and remote, will see. A former superintendent gave twenty-four years to this job. I am willing to say that more than any other one person, he made "Middle-aged" Walla Walla what it is today.

The responsibilities of the superintendency are matched only by the detailed work required by the position. The office is open to every parent, teacher, taxpayer and pupil; the activities of every school solicit his interest and attendance. He is educational planner, business overseer, public relations expert, personnel manager.

Such is the job of W. A. Lacey, your far-seeing human, effective superintendent of schools.

Written by DEAN LOBAUGH



Meet the busiest man in Walla Walla! Principal Lobaugh. This raven-maned dynamo is greeter, entertainer and bouncer. He is president, registrar, bur-sar, field agent, curriculum specialist, research co-ordinator, alumni secretary, public relations man, director of personnel and Dean of everything.

In the busiest spot in Walla Walla he must maintain the judgment of a chief justice amid the bustle of a government construction job. He shields others from the shocks of operation. Complaints, inquiries, compliments, activities, committees, programs, parents and teachers, students, salesmen, ax-grinders, nuisances, bulletins, reports, schedules, records, organization, supervision—heavy, unrelenting detail—guard-rails of policy, broad shoulders for a modern high school. All the children of all the people . . . fundamentals . . . frills . . . citizenship . . . environment . . . nurture . . . Rugg . . . college entrance requirements . . . essay contests . . . P. T. A. . . N. E. A. . . W. E. A. . . N. Y. A. . . etc.

Why any man wants to be principal——!

Written by W. A. LACEY



First row: Austin, Byers, Anderson, Hovila,
Dunn, Clark, Goodrich, Lybecker

Second row: Casey, Hamm, Cox, Lindner,
Corn, Haase, Emigh, Graham

Third row: Draper, Falk, Little, Kirk, Ayers.

THEY KEEP

PAUL V. ANDERSON
History
Boys' Adviser

B. E. AUSTIN
History
Attendance Officer

UNA AYERS
Home Economics
Home Ec. Club Adviser

DOROTHY BYERS
Commercial
Dramatics

LUCILE CASEY
Girls' Sports
G.H.S. Adviser

HARRISON CLARK
Head of Commercial Dept.

DOLLIE CORN
English
Bookrooms

DESSIE COX
English
Adviser, Class of 1943

JULIANA DRAPER
History
Cafeteria Comm.

RUTH DUNN
Mathematics
Math. Club Adviser

RALPH EMIGH
Mathematics
Frosh Basketball

MYRTLE FALK
English
Freshman Assemblies

W. J. GOODRICH
English
Royal Blue Adviser

MABEL GRAHAM
Commercial
N. Y. A.

ALBERT HAASE
Commercial
Football Assistant

FAY HAMM
Head of English Dept.
National Honor Society

ANN HOVILA
Commercial
Dramatics

SGT. JAMES HUBBS
R. O. T. C.

LAWRENCE JACKY
Athletic Director
W. W. Club

A. R. JEFFS
Biology
Head Coach, Basketball
and Football.

ALICE M. KENYON
Science
Visual Education

BESS KIRK
Head of Mathematics

LILLIAN LINDNER
English, Latin,
Girls' Classical Club

AGNES LITTLE
English
Adviser, Class of 1942



First row: Peterson, Moseley, Westacott, Morton, McCormick.

Second row: Reynolds, McIntyre, Kenyon, Yates, Yeomans.

Third row: Welch, Steelsmith, Reed, Stevens, Wheeler, Lobaugh.

US BUSY

CHESTER LYBECKER
Agriculture
F. F. A.

HELEN MC CORMICK
Commercial
Dean of Girls

LUCILLE McINTYRE
Head of Language Dept.
Equites Club

GERALD MECKELSON
Industrial Arts
F. C. A.

BERNARD MIEGER
Vocal Music

WILMA MORTON
Languages
French Club, German Club

MARGUERITE MOSELEY
Librarian

IVY PETERSON
Guidance
Adviser, Class of 1945

META PFEIFFER
English

MAJOR OLIVER PORTER
R. O. T. C.

PAUL M. REED
Chemistry
Head Gatekeeper

HELEN RESER
Nurse
El Adrea

ALLEN REYNOLDS
Mathematics
Camera Club

LAURA LEE ROBISON
Art
Adviser, Class of 1944

C. A. STEELSMITH
Head of Mechanical
Arts Department

J. W. STEVENS
English
Journal Adviser

B. A. TACK
Head of Science Dept.
Stage Manager

H. C. TILLEY
Instrumental Music

WAYNE WELCH
History
Baseball Coach

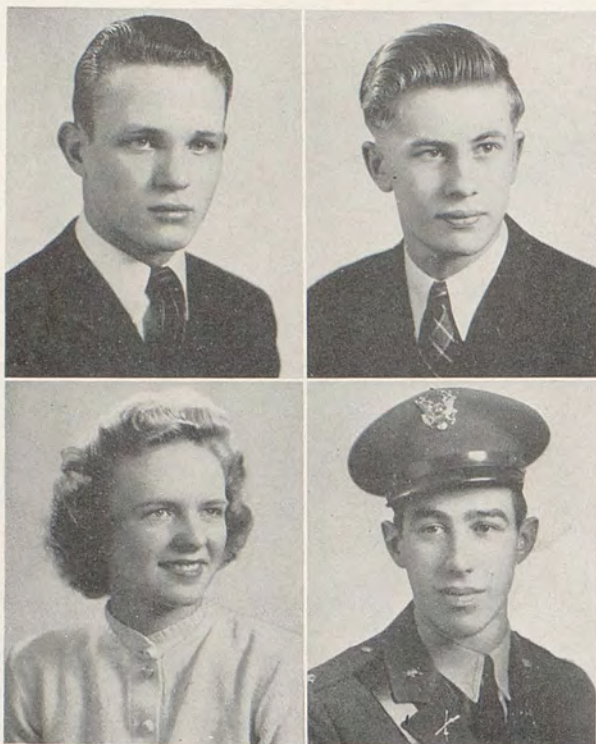
MARY WESTACOTT
Home Economics
Gimmel Teth

W. B. WHEELER
English
Freshman Football

MARY K. YATES
Science
Home Economics

FRANCES YEOMANS
Head of History Dept.

THE FIFTIETH YEAR



Lee Coultas
Carma Mathison

Eugene Heric
David Dacres

FIRST SEMESTER—

LEE COULTAS, President
JACK MELTON, Vice-President
PAUL GARLAND, Secretary-Treasurer
MISS LITTLE, Adviser
MISS YEOMANS, Adviser

SECOND SEMESTER—

EUGENE HERIC, President
DAVID DACRES, Vice-President
CARMA MATHISON, Secretary-Treas.
MISS LITTLE, Adviser
MISS YEOMANS, Adviser

COMMITTEES

The committees listed below have arranged exercises for this, Wa-Hi's fiftieth graduating class, in which Dorothy Robinson, valedictorian, and Dora Pratt, salutatorian, share the spotlight.

ANNOUNCEMENT AND JEWELRY COMMITTEE

Jean Adair Croxdale	Mildred Bastrom	Bob Beechinor
Howard Dixon	Alvin Hansen	Lorraine Maughan
Barbara Hall	Carma Mathison	Pat Morrison
Mary Anne Timm	Hubert Holderman	

BACCALAUREATE AND COMMENCEMENT COMMITTEE

Art DeBoer	Phil Neslin	Lois Couch
Hubert Holderman	Helen Meyers	Pauline Fondahn
Leslie Wendler	Sarah Frank	Carma Mathison
David Dacres	Helen Zahl	Eugene Heric

Caps and gowns were handled by Ethel Renick.

THE FIFTIETH YEAR

BETTY ALLISON
 Girl's Fed. Sec. 4
 Girl's Fed. Cabinet, 4
 Senior Play Comm., 4
 Girl's Rifle Team, 3, 4
 Journal, 3, 4

FRANK AMEN
 Pres. Golf Club, 4
 Sec. Officers' Club, 4
 Capt. in ROTC, 4
 Wrestling Letter, 1

JAMES ANDERSEN
 Math. Club Pres., 4
 Stage Crew, 1, 2, 3
 Radio Announcer, 4

VENDELL
 ANDERSON
 Journal, 4

NORMA ANSPAUCH
 French Club
 Girl's Rifle Team, 3, 4
 Play Comms., 4
 Glee Club, 4
 Journal, 2, 3

ELEANOR ARBINI

EVA ARBINI

WENDELL ARY

DOROTHY AUTREY
 Leg. Assembly, 2
 Girls' Cabinet, 4
 Operetta, 4

FRANCES AYERS

DICK BACKLUND
 Aviation Club
 Vice Pres., 3
 Rifle Team, 3
 Officers' Club, 4

VIOLET BAILEY
 Girls' Cabinet, 4

SHIRLEY BARCLAY
 Student Cabinet, 4
 Girls' Cabinet, 2
 Gimmel Teth Pres., 4
 Yell Staff, 4
 Sponsor, Lt.
 Pep Squad, 2

LOIS BARNEY
 Leg. Assembly, 2
 Sports Club, 2, 3, 4
 Girls' Sports
 letter, 4
 Class Rep.

MIRIAM BARR
 French Club, 4
 Leg. Assembly, 4
 Transfer from
 Clareshalm,
 Canada

MARJORIE
 BARRETT
 Leg. Assembly, 3
 Operetta, 3

BOB BASLEE

PAT BAXTER
 Leg. Assembly, 1
 Junior Secy. Treas
 Gimmel Teth
 Sponsors, Capt., 4

SYLVIA BECK
 German Club
 Sec., 4
 Treas., 4
 Sports Letter, 3

VERNA BECK
 German Club, 4
 Home Ec. Club, 1
 Leg. Assembly, 4

BOB BEECHINOR
 Leg. Assembly, 2
 Ski Club

RICHARD BENZEL

MARGERY
 BERGEVIN

ANGELINA BIAGI





THE FIFTIETH YEAR

BOB BOLDMAN	RALPH BRISTOL	JEWELL BROOKS	MELVIN CARLE Leg. Assembly, 3	HELEN CARSON Leg. Assembly, 3 Gimmel Teth Journal Reporter, 3 Royal Blue Sales Staff, 3 Pep Squad, 4 Girls' Rifle Team, 2	ELAINE CHASE
FLORENCE CHRISCOE Girls' Classical Club, 1, 2, 3, 4 Royal Blue Sales Staff	ALVALU CLEVELAND	ROBERT CLURE	BOB COLLEY	BOB CORN Leg. Assembly, 2, 3 Aviation Club Officers' Club, 4	LOIS COUCH Girls' Council Sponsor, 2, 3,
HELEN COYLE Girls' Fed. Pres., 4	DOUG CRAWFORD Journal, 3, 4 Football, 3 Basketball, 3 Leg. Assembly, 1, 3, 4	VIRGIL CRISCOLA F. F. A. Band, 2, 3, 4	NELLIE CREEK Girls' Fed. Cabinet, 4	JEAN CROXDALE Gimmel Teth Treas., 2 Leg. Assembly, 1 Court, 4 Girls' Fed. Council, 3 Ticket Sales Comms., 4 Senior Treas., 3	GLEENDA CUPP Leg. Assembly, 4
DAVID DACRES Equites Class V. P., 4 Leg. Assembly, 4 Basketball, 3, 4 Officers' Club, 4 W. W. Club Treas., 4	GEORGE DANIEL Equites Leg. Assembly, 2, 4 Officers Club Sec., 4 Journal, 4	PEGGY DAVIS El Adrea Leg. Assembly, 1 Girls' Fed. Cabinet, 4	DORIS DEARE Leg. Assembly Girls' Cabinet, 4 Girls' Council, 3 Annual, 2 Nat. Honor Soc.	ART DEBOER French Club, V. P., 4 Journal, 1 Band, 1, 2, 3, 4	WILMA DEETER
JAMES DEVANEY F. F. A. Potato Judging, 3 Stock Judging, 4	BETTY DIEHL Transfer from Dixie	HOWARD DIXON Leg. Assembly, 4 Class Rep., 4 Basketball Manager, 4	TOMMY DIXON	JAMES DOAK Leg. Assembly, 4 Troubadour, Sec., 2, 3 Journal, 1, 2, 3 Band	GEORGE DORMAIER Play Comm., 4 Journal, 2, 3 Annual Sales, 2
KIRK DRUMHELLER S. B. President, 4 Leg. Assembly, 2 Class Pres., 2 Class V. P., 3 Equites Pres., 3 Nat. Honor Society	WALTER DUNCAN	ANGELINA ELIA	LLOYD ELLSWORTH Leg. Assembly, 4 German Club Pres., 4 ROTC Officer	FRANK EMIGH Rifle Team Aviation Club Officers' Club	ELDON ENGEL Football, 3, 4 Leg. Assembly
RUTH FAHEY Girls' Classical Club Nat. Honor Society Quill & Scroll Royal Blue Editor, 4	SAM FARMER Equites Chief Justice, 4 Junior Class Pres.	ELEN JOYCE FERRIS Leg. Assembly, 1 Girls' Council, 4 Girls' Sports Club Journal, 3, 4 Nat. Honor Society Girls' Sports Letter, 3	DAVE FLAHERTY	RICHARD FLOWER Leg. Assembly, 2, 4 "Girl-Shy", 4 Journal Ad Staff, 1 ROTC Officer	OLIVE FOLLETT
PAULINE FONDAHN Leg. Assembly, 3, 4 Girls' Cabinet, 4 Nat. Honor Society	SARAH FRANK Leg. Assembly, 1	MELBA FRANKSON	ARTHUR FROESE German Club	TED FROESE	CHARLES GALLO Band, 1, 2, 3 Orchestra, 1, 2, 3



THE FIFTIETH YEAR

VICKY GALLO
Sponsor, 2, 3, 4
Leg. Assembly, 4

DOROTHY GARD
Student Cabinet, 4
Leg. Assembly, 1, 2
Girls' Fed. Sec., 3
El Adrea Pres., 4
Nat. Honor Society, 4

PAUL GARLAND

FRANKIE GARRETT
Leg. Assembly, 1, 2, 3
Football, 3, 4
Baseball, 2, 3, 4

RICHARD GARRETT
S. B. Vice-Pres., 4
Equites
Student Cabinet, 4
Band

LOU VERNA
GIBERSON

EVELYN GOODMAN
Girls' Fed. Council, 4
French Club
Play Comms., 4

JACK GOTTTWIG

GERALD GRADWOHL
German Club, 4
Officers' Club, 4

HELEN GROSS

BILLY HAINES
Leg. Assembly, 3
Equites
W. W. Club
Officers' Club, 4
Baseball, 3, 4

BARBARA HALL
Sponsor, 2, 3
Drum Major, 4
1, 2, 3, 4
Journal, 4
Yell Staff, 4
Student Cabinet, 4

MARY JANICE HALL
Play Comms., 3
Sponsors, 4
Annual, 2

YVONNE HAMLIN
Pres. French Club, 4
Journal, 4

VERDEAN HARMAN

ADELE HARRIS
El Adrea
Asso. Ed. Journal, 4
Girls' Fed. Council, 3
Nat. Honor Society, 3, 4
Quill & Scroll, 4

MAXINE HARTLEY
Leg. Assembly, 1, 4
Class V. P., 1

ELAINE HARVEY
Leg. Assembly, 1
Girls' Classical Club
Operetta, 3
National Honor
Society, 3, 4

DEAN HASTINGS

LAWRENCE
HATCHER
Leg. Assembly, 3
Homeroom Pres., 4

GUYE HENDERSON
Basketball

FRANCES HERBERT
Leg. Assembly, 3

EUGENE HERIC
Senior Class Pres.
National Honor
Society, 4

EDRA HILBERT
Leg. Assembly, 1
Math. Club
Sponsors
Annual Sales, 4
Plays, 3, 4

GEORGE HOFER

BOB HOLDERMAN
Class Sec. 2

HUBERT
HOLDERMAN
Equites Pres., 4
Journal, 4

JACK HOWELL
Student Cabinet, 4
Nat. Honor Society, 4
Officers' Club, 4
Band, 1, 2, 3, 4
Equites
Leg. Assembly, 2

FLOYD HALSTEAD
Camera Club

BETTY
HUDDLESTON
Leg. Assembly, 4
Girls' Cabinet, 4
Girls' Council, 4
El Adrea Pres., 4

CLAIR BELL
HULBUSH
Girls' Rifle Team, 4
Annual, 2
Play Comms., 4

RICHARD JACKSON
W. W. Club, 3, 4
Officers' Club, 4
Wrestling, 3, 4

FRANCES JAMESON
Play Comms., 4

DEAN JENSEN
Student Cabinet, 4
Equites V. P., 4
Boys' Fed. Comms., 4
Annual, 1, 2, 3,
Play Comms., 4
Band

GENE JESSEE
Transfer from Seattle

THELMA JOHNSON
Leg. Assembly, 4

BETTY JONES

LAURA LEE JONES
Journal, 4
Sponsors, 2, 3, 4
Annual, 3
Math. Club, 3, 4
Leg. Assembly, 1, 4
Girls' Sports
Club, 1, 2

RAMON KENDALL
F. C. A. Sec., 4

MARGARET KIGHT
Student Cabinet, 4
Student Court, 3
French Club
National Honor
Society, 3, 4
Journal, 4
Leg. Assembly, 3

PATRICIA KING
National Honor
Society, 3, 4
Ed. B. Quill &
Scroll, 4
French Club, 4
Girls' Fed. Council, 4
Leg. Assembly, 4

HULDA KISON
Girls' Fed. Cabinet, 4
Girls' Rifle Team, 4
Play Comm., 4

ELSIE KNUDSON

IRVING KNUDSON
Homeroom Pres., 4

ALDINE
LADOUCEUR
Home Ec. Club
Girls' Rifle Team, 4

ALICE LARGENT
Drum Major, 4

WILLIAM LEPIANE

JACK MELTON
Officers' Club
Football, 1, 2, 3, 4
Ski Club
A Cappella Choir, 4



THE FIFTIETH YEAR

BETTY LEROUX
Leg. Assembly, 1
French Club
Royal Blue Sales
Staff, 2, 3

WALLACE
LINDELIEN

HAROLD LUTZ

BETTY MACDONALD

JOIS MCBAIN
Journal Reporter, 4

DALLAS MCFALL

PATTY MCKELLIPS
Leg. Assembly, 1
Play Comms., 3, 4
Girls' Cabinet, 4

RALPH MCKINLEY

FRANCES
MARSOLEK
Leg. Assembly, 1
Sophomore Class
Secretary-Treas.
Gimmel Teth
Girls' Rifle Team, 3

CARMA MATHISON
Girls' Cabinet, 4
Senior Class
Secretary-Treas.
Plays, 1, 2, 3, 4
Girls' Rifle Team, 2
Pop Squad, 4
Gimmel Teth Sec. 1, 4

GAIL MARTIN
Officers' Club, 4
Rifle Team, 1, 2, 3, 4
Track Letter, 2

HOWARD MARTIN

LORRAINE
MAUGHAN
Girls' Fed. Cabinet, 4
Girls' Fed. Council
Girls' Classical
Club Pres., 4
News Editor, 4
Nat. Honor Soc., 3, 4
Quill & Scroll, 4

LESTER MOCK
Student Court, 4
Leg. Assembly, 4

VALERA MOORE

PAT MORRISON
Girls' Fed. V. P., 4
Gimmel Teth

FRANCES MOULTON
Girls' Fed. Cabinet, 4
Girls' Fed. Council, 4

MARIE MURPHY
Girls' Rifle Team, 4

HELEN MYERS
Leg. Assembly, 4

PHIL NESLIN
Play Comms., 1

DOROTHY NIEMAN
Play Comms., 4

MARTHA O'DELL
Student Cabinet, 4
Gimmel Teth
Tri-State Conf., 3
Stud. Leader Conf., 4
Leg. Assembly, 2, 3
Journal, 3, 4

BUFFY OLDRIDGE
German Club Pres., 4
Annual Sales, 4

ANITA OTIS
Camera Club
Chorus, 4

BUD OWEN

DONNA PAGE

MELVIN PAGE
W. W. Club

ORIN PAGE
F. F. A.

M'XINE PAULY
Leg. Assembly, 2, 3
Journal, 4
Homeroom Pres.

HUBERT PEELE
Football, 1, 2

WILDA PIERSALL
Leg. Assembly, 4
"The Thirteenth
Chair", 4

WINIFRED
PIERSALL
Leg. Assembly, 1, 3, 4
"Girl-Shy", 4

BILL PORTCH

NORENE POSEY
Mau et Corde, 3, 4
Girls' Fed. Cabinet, 4
"Girl-Shy", 4
Sponsor, 3, 4
Leg. Assembly, 4

WALLY QUESTAD

LOLA REHBERG

ETHEL RENICK
Girls' Fed. Cabinet, 4

DONNA RENNER
Leg. Assembly, 1, 3, 4
Girls' Fed. Cabinet, 4
Home Ec. Club, 2
"Beginner's Luck", 3

JOYCE RESER
Nat. Honor Soc. 4
Play Comms., 4
French Club

ALICE RIMBEY

DOROTHY
ROBINSON
Valedictorian

DOROTHY ROFF
Girls' Trio, 3
Operetta, 4

VIRGINIA ROGERS
French Club
Journal, 2
Leg. Assembly, 3
Sponsors, 2, 3, 4

DOROTHY
ROTHENBERGER
German Club

LILA SAVAGE

MARIAN SCHMIDT
German Club V. P., 4

RUSSELL
SCHUPPNER
Transfer from
La Jolla, Calif.

VIRGINIA SHICK
Stud. Body Sec., 4
Girls' Fed. Council, 1
Student Cabinet, 4
Gimmel Teth Pres, 4
Stud. Lead. Conf., 4
"Girl-Shy", 4



THE FIFTIETH YEAR

EDYTHE SIMMONS
Girls' Cabinet, 4
Play Comms., 4

ASTA SKOUBO
Leg. Assembly, 4

BARBARA SMITH
Girls' Fed. Council, 2
French Club Pres., 4
Girls' Rifle Team,
2, 3, 4
Play Comms., 3, 4
Journal, 2

CHESTER SMITH
F. F. A. Vice-Pres., 3

ELMER SMITH
F. F. A. Vice-Pres., 4

MARGUERITE
SMITH
Leg. Assembly, 3
Home Ec. Club
Sponsors, 2, 3, 4

WALTER SMITH

PAT SNYDER
Transfer from
Spokane, 4

LEROY SOPER
French Club
Journal, 3
Leg. Assembly, 1, 2

ZELMA SPENCE
Dance Comms., 3, 4
"The Count & The
Coed," 3
Glee Club, 2, 3
Annual Sales, 2,

BOB SPOHN
Leg. Assembly, 1, 2
S. B. Treas., 4
Journal, 4
Baseball, 2, 3, 4
Student Cabinet, 4

ELEANOR STOKES
Leg. Assembly, 2
Troubadours, 2
Girls' Rifle Team, 4
Picture Ed., 4
Annual Sales, 2, 3

LESLIE STONEMAN
Boys' Fed. Secretary-
Treasurer, 4
Eques
W. W. Club
Tennis, 2, 3, 4
Football, 4
Basketball, 4

ILENE STRODE

EUGENE
STRUTHERS
Student Cabinet, 4
Student Court, 1, 2
Class Pres., 3
Editor Journal, 4
Quill & Scroll, 4
Officers' Club, 4

EUGENE SUTIU

RUSSEL TAYLOR
Leg. Assembly, 2, 4

JAMES TEMPLETON
French Club

MARY ANN TIMM

DON TOMLINSON
F. F. A. Pres., 4
U. P. Award, 4
ROTC Commission, 4

PEGGY TOMPKINS
Girls' Fed. Cabinet, 4
Girls' Class. Club, 3, 4
Annual, 2, 3
Play Comms., 4
Girls' Rifle Team, 2, 3

KENNY TORREY
Camera Club
Football
Track

SHEREL TUCKER
Journal, 4

LESLIE VANNICE
F. C. A. Pres., 2, 3, 4
Stage Comm., 3

RUTH VON NAHMEN
Operetta, 3

KATHERINE
VON DER AHE
Manu Et Carde

MARJORIE WAGNER

JIMMIE WAMBLE

BRYAN WATSON
Eques Sec., 2

LESLIE WENDLER
Math. Club Pres., 4
"Girl-Shy", 4

GEORGE WHIPPLE

DARRELL
WHITELEY

GWEN WICKLAND

VIRGIL WILLS

BETTY WILSON
Hall Monitor, 4

IRVING WINTERS
Leg. Assembly, 4
Officers' Club Pres, 4
Track, 2, 4

DOROTHY WOODS
Girls' Fed. Cab. &
Council, 3, 4
Girls' Class. Club,
1, 2, 3, 4
An. Asst. Editor, 4
Annual Sales, 4
Sponsor, 2, 3, 4
Girls' Rifle Team,
2, 3, 4

EDWARD
WOOLCOCK

MARJORIE WREN
German Club Sec., 3

LA VERNA YANKEE

HELEN YEEND
Head of Council, 4
Girls' Sports Club
News Broadcasts, 4
"Good Night Please"
Girls' Fed. Cabinet, 4
Girls' Sports Letter, 2

PATRICIA YEEND
Girls' Cab. &
Council, 1, 4
N. H. S. Treas., 4
Play Comms., 4
Leg. Assembly, 1

JACK YODER
Transfer from
Dufur, Oregon, 3

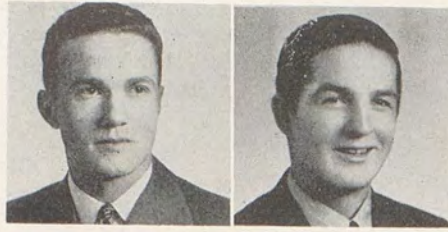
HELEN ZAHL
Girls' Fed. Treas., 4
Girls' Fed. Cabinet, 3
Bus. Man. Annual, 4
Sponsors Lieut.
N. H. S., 4
Quill & Scroll, 4

DELBERT ZIER
Leg. Assembly, 4
Officers' Club, 4
German Club
Boxing, 3, 4

RUTH BUTHERUS

ROSS MCINTOSH

WANDA SANTO



JUNIOR STONE BOB UMPHRES

SENIOR B's

Row 1. Clarence Beck, Bruce Boylan, Bryce Boylan, Shirley Davis

Row 2. Laverne Harding, Billy Hart, Richard Laufer, Bob Marr

Row 3. George McIntyre, Florence Smith, Daniel Shepherd, Adaline Shigley

Row 4. Imogene Spearman, Evelyn Spencer, Bill Steinbeck, Nadine Taylor



CAMERA SHY SENIORS

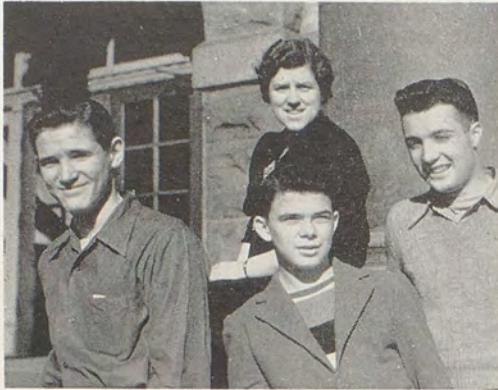
JEANNE BENNETT	WALLACE LONGMIRE
JOHN COLLIER	ESTELL McDOWELL
WALTER COTTRELL	JAMES MEINHART
LEE COULTAS	RUDOLPH MOHR
HAROLD EGGERS	DORA PRATT
CURTIS FOLTZ	IVA RANKIN
BETH GROSS	MARIAN REYNOLDS
WILLARD LEPPER	ZELMA SPENCE
BESSIE YARNELL	

CAMERA SHY SENIOR B's

MINNIE BLAYLOCK	DON FLEMING
VIRGINIA BRADFIELD	BILL FOUTS
LILLIS HARVEY	EARL GORDON
MILDRED HOLWAGER	BOB HALL
BLOSSOM LAY	DICK HELMICK
DOROTHY PELLISSIER	GLENN HENDERSON
VIRGINIA PIKE	BILL JONES
NORMA RADER	MELVIN LEPPER
BONNIE SHELTON	ROY RINGEL
SYBIL WEAVER	ROBERT ROOK
DICK CECIL	ALBERT TURLEY
NEIL DICKEY	WALTER ZIER
JACK DULL	BILL VANDERWALL

DAN NEW

FIFTY-FIRST CLASS



Right to Left
 NORMAN SMEEDES, President
 BOB STEVENS, Vice-President
 WALLY FISHER, Secretary-Treasurer
 MISS COX, Adviser

First Semester,	Second Semester
Stanley Maiden <i>President</i>	Norman Smedes
Ann Judy <i>Vice-President</i>	Bob Stevens
Pat Barton <i>Secretary-Treasurer</i>	Wallace Fisher
Miss Dessie Cox <i>Adviser</i>	Miss Dessie Cox

The Junior class is proud of the successful prom they sponsored this year. It was their second dance, their first, also successful, having been staged when they were freshmen. Bob Lange was general chairman of the prom committees, Evelyn Kludas was in charge of decoration, Pat Barton handled ticket sales, Norman Smedes supervised publicity, Bob Frazier arranged for refreshments and Frances Hooper headed the committee for programs.

Junior girls were responsible for planning and serving this spring's senior teas.

Bill Fouts, basketball and baseball hero, and Bob Sporleder, two-time state boxing champion, are the athletic lights of the group. In addition, the class has a monopoly on the ski team. All four boys who represented Wa-Hi in the state ski tournament are juniors.

An unusually large number of juniors were elected to membership in the National Honor Society this year, reflecting the esteem in which members of this class are held.

Nine of the seventeen members of the all-school play cast were juniors.

58

Row 1. Pemberton, Mawhin, Frank, Roark, Jesse, Gallo, Carson, Bowman, Austin Vague.

Row 2. Zier, Goodman, Roseboro, Stockham, Kramer, Ferris, Schaefer, Lehman, Harding.

Row 3. Williams, Coe, Braman, Falconer, LeFors, Wendt Eggers, Hess, Gabel.



115

Row 1. Reed, Freeman, Miller, Jordan, Shearer, Renick, Ringhoffer, Fullerton, Wilson.

Row 2. Davin, Merkle, Reynolds, J. Maxon, Bogle, King, Townsend, Noland.

Row 3. Grote, Ovens, Russell, Jones, Buck, McBride, Curcio, K. Maxson.



118

Row 1. L. Thompson, Talbott, Dahl, N. Dagget, Fritzer, Woods, S. Pfaffle, Rothenberger, Gettman.

Row 2. Marshall, Lusk, Leplane, Beuhler, Freeman, Apple, Reese, J. Adams.

Row 3. Furstnow, Rookstool, Dirk, Mace, Hergert, Chaney, Tanner, Kludas, Smith.



201

Row 1. Isitt, Columbo, Elliot, Harris, Henzel, Baumgardner.

Row 2. Smith, Judy, Wolf, Trumble, Schatzel, Walters Jerglin.

Row 3. Nissen, McManus, Simmons, Walher, Jenkins, Hogue, Baumgardner, Thornton.



208

Row 1. Miller, Kenworthy, Stevens, Maccaroni, Chandler, Brecount, Ludwigs, Fisher.

Row 2. Bunker, Fitzgerald, Ankeny, Johnson, McDowell, Finn, Merklin, Brooks.

Row 3. Yankee, Thomas, Clark, Franz, Young, Craver, Walters, Gilliam, Powers.





209

Row 1. Dick Olin, Paul Criscola, Murphy, Lynch, Lawrence, Paul Stemmer, Don Huddleston, Don Parsons, Stan Maiden, Schifman.

Row 2. Connery, Bill Perkins, Gehrett, Paul Lindstrom, Boyer, McLean, Dodd, Langton, Gorham.

Row 3. Arthur Bischoff, Bill Clarke, Watson, Floyd Gilliam, Dick Lowden, Clarence Atchison, Lester Lay, Bob Demory, Whelply.



210

Row 1. Brock, Middleton, Bob Sporleder, William Zigman, Jamieson Hartley, Gilbert Graf, Turner, Lewis Harris, Floyd Langton, Morrison.

Row 2. Stiles, Wirth Harold Lutz Onstine, Bob Frazier, Harold Bristol, Norman Smedes, Jerry Miller, Wilson, Richard Klicker.

Row 3. Robert Fiedler, Jackson, Bob Swenson, Hauck, Murphy, Jim Nelson, Fletcher, Peter Melitz, Bob Lange, Howard Peachy, Howard Williams.



213

Row 1. Marjorie Turley, Frances Porter, Irene Babb, Evelyn Archer, Ruth Klicker, Lawrence, Gloria Davis.

Row 2. Kathleen Volle, Munger, Thompson, Frances Hooper, Betty Lamb, Judy Pringle, Gwen McGrew.

Row 3. Patty Casey, Elizabeth Dotson, Nellie Butler, Jeane McFarland, Loney, Virginia Romine, Thomas, Clark.



314

Row 1. Frankson, Thompson, Mary Lu Kimmerly, Joan Lenfesty, Patty Hutsel, Moulton.

Row 2. Dorothy Smith, Mona Quackenbush, Lorraine Gardner, Louise Dunn, Phyllis Goggin, Schaeffer, Mary Ledgerwood.

Row 3. Pat Kenny, Meiners, Agnes Barger, Downy, Jean Davis, Rachel Knowles, Betty Beck.

GIRL'S GYM

Row 1. Shirley Gross, Woodward, Betty Winkle, Mary Lanckton, Marian Woodhall, Sybil Tate, Elsa Thompson.

Row 2. Charlotte Wilson, Pat Barton, Joan Valaer, Leoma Kann, Dorothy Longmire, Shirley Yenneny, Margaret Fisher.

Row 3. Barbara Willman, Lois Waldron, Doris Bryant, Bette Lou Skow, Helen O'Hearn, Phoebe Weaver, Helen Dudley.



FIFTY-SECOND YEAR

DICK TURBACK, Vice-President
 CHARLOTTE WIRTH, President
 BOB KLICKER, Sec.-Treasurer
 MISS ROBISON, Adviser



END OF FIRST HALF

FIRST SEMESTER—

John Drumheller.....	<i>President</i>	Miss Robison
Bob Ovens	<i>Vice-President</i>	Dick Turback.....
Dean Gehrett.....	<i>Sec'y-Treasurer</i>	Bob Klicker
Miss Robison.....	<i>Adviser</i>	Miss Robison

SECOND SEMESTER—

As they reach the halfway mark in their high school careers, members of the sophomore class are finding their niches in those activities in which they will be leaders two years from now.

In the field of athletics the second year class has many who will be drawing cheers in the years to come. John Stephens stepped into the football picture last fall to earn his letter as an end. He also looked good on the basketball court near the end of the season; this spring he is a jumper on the varsity track squad.

Dick Turback started the football year as a reserve guard but won a starting assignment and his letter before the season's end.

Sherman Mitchell is a pitcher on the varsity baseball squad, Bob Klicker is a third baseman and Eugene Sherwood, a fielder. Arnold Hansen is the number two catcher of the Blue Devil squad. Les Kibler and Lloyd Hill are second-year members of the track team.

Richard Nightingale and Eugene Soper were elected this spring to serve as sophomore representatives on the editorial board of "The Scroll." Eunice Maier, Bob Klicker and Dorothy Ann Humphrey have been sophomore justices of the student court.

Everill Cummins was on the school debate squad. Hallie Comstock plays in the school orchestra.

More citations of individuals could be made but those mentioned are sufficient to show that the sophomores are taking an important part in school activities.

The class, however, have not let their interest in activities interfere with their scholastic achievements. Thirty-nine sophomores earned places on the first quarter honor roll with Maxine Lanchester and Carol Morris rating straight "A" reports.

Wesley Benefiel, Bill Berney, Rosalie Jordan, Willa Dean Ogden and Maxine Lanchester had straight "As" the second quarter. Thirty-four of their classmates were also on the honor roll for that quarter.

Wesley Benefiel had the only sophomore straight "A" for the third quarter, but thirty-eight others of the class earned honors.

In the first seven quarters of their high school life, the sophomores have averaged 36 places on quarter honor rolls.



57

Row 1. Mays, Huber, Pifer, Hamm, Anderson, Zier, Dipolito, Cooper, Hill.
 Row 2. Wright, Arbogast, Robinson, Long, Sherman, Hill, Fleck, Stebner.
 Row 3. Day, Catlon, Woodworth, Yeend, Merklin, Batey, Barney, Campbell.



101

Row 1. Chernis, Smith, Manley, Gilman, Bergevin, Stearns Gallo, Cline, Jessee.
 Row 2. Dillon, Cass, Mele, Faught, Bates, Pieper, Kelso, Marks.
 Row 3. Mackin, Knous, McFillin, Barton, Martin, Bender, Frank, Bareth, Knouf.



109

Row 1. Sleeter, Mathews, Benefiel, Alton, Spence, Turbuck, Boule, Buerstatte, Reihl, Reister.
 Row 2. Robison, Soper, Hull, Guglielmi, F. Miller, Stroup, T. Miller, Krebs, Della.
 Row 3. Hutsell, Rieker, Lockbart, Marshall, Bennington, Breen, Lalumondier, Starr.



104

Row 1. Perlman, Glover, Holderman, McCauley, Torrey, Humphrey, Winget, Corkrum.
 Row 2. Kralman, O d g e n, Pauly, Keen, Tocco, Bughl, Richardson.
 Row 3. Dicus, Lanchester, Reiswig, Robinson, Woodhall, Gilliam, Eckhardt.

114

Row 1. Umphres, Terhaar, Stratton, Leonetti, Tucker, Christiana, Parks, Logan, Romine.

Row 2. Hansen, Overturf, Bishop, Anderson, Coleman, Berney, Mc Duffie, Smith, Tomlinson.

Row 3. Miller, Walker, Gallaher, Nightingale, Chase, Brittain, McIntosh, Stephens, Naimy, Fields.



204

Row 1. Spencer, Hall, Shirrod, Schessler, Harding, Kessler, Nightingale, Page, Rehberg.

Row 2. Jones, Knell, Taylor, Schreiner, Fondahn, Curcio.

Row 3. Biggs, Sept, Berry, Wolfe, Southern, Quesenberry, Ablott, Clarkson.



207

Row 1. Manuel, Loney, York, Johnson, Buck, Zier, Schuchart, Oswald.

Row 2. Gallaher, Dirks, Rounsaville, Steen, Jordan.

Row 3. Peterson, Leeper, Pajorlie, Vaughn, Comstock, Crites, Curcio, Vanderpool.



318

Row 1. Rankin, Shepherd, Meyers, Gehrett, Pollard, Malden, Follett, Thompson, Whiteley, Drumheller.

Row 2. Shinbo, Kincheloe, Yenny, Smedes, Mitchell, Klieker, Petrelli, Bennett, Bishop.

Row 3. Fuller, Sherwood, Carson, Dippel, Thirtyacre, Owens, Burkhardt, Gerking.



319

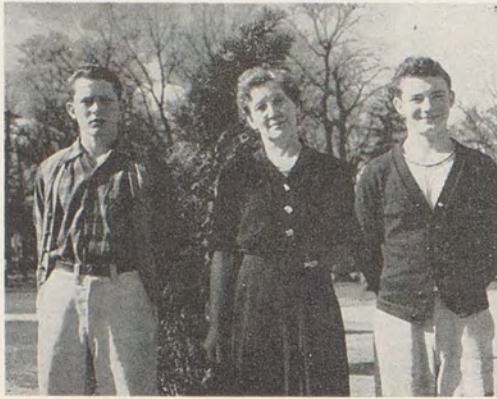
Row 1. Hoffman, Hawks, Winn, D. Armstrong, Wirth, Gallington, Crewse, Mohrland, Zeller, Morris.

Row 2. Gordon, Johnson, Hamilton, Gilkerson, LaDouce, Smith, L. Armstrong, A. Davis, Rink.

Row 3. Cox, Dawson, Zigman, Ausman, Mayo, Neel, Maier, Loney, Benzel, Kilbourne.



FIFTY-THIRD YEAR



BILL VAN ATTA, President
MISS IVY PETERSON, Adviser
KENNY NOBLE, Vice-President

FRESHMAN OFFICERS

First Semester		Second Semester
Gloria Woodhall <i>President</i>	Bill Van Atta
Barbara Millard <i>Vice-President</i>	Kenneth Noble
Bill Van Atta <i>Secretary-Treasurer</i>	Burton Thompson

THE FROSH KEEP BUSY

Freshman Assemblies:

October 7: Kirk Drumheller introduced associated student officers and members of cabinet.

October 14: A sing conducted by Mr. Mieger.

October 28: Mrs. Penrose talked to class.

November 11: Senior Play Skit.

Others were: A talk by Mr. Lobaugh; Girl's Federation Play.

Outstanding Freshman boys participating in sports:

Kenneth Noble—Track and basketball.

Joe Gilliam—Track and basketball.

Robert Plucker—Track and basketball

Ray Pringle, Bill Van Atta, Dick Frank—Boxing.

Highest grade average: Irene Krebbs—one B since school started.

56

Row 1. Ruff, Sanders, Davin, Landoni, Gradwohl, Sheldon, Eggers.

Row 2. Fox, Bishop, Dillon, Charlo, Fries, LeRoux, Pugliese, Kelly, Fehrenbacher, Jeglin.

Row 3. Hughes, Brashier, Kelly, Maccaroni, Walker, Woods, Burdett, Campbell, Chapman.

Row 4. Appling, Ary, Jacobson, Zwanzig, McKinley, Records, Lalumondier, Macklet, Miller.



106

Row 1. Glaspey, Ward, Swanson, McKellips, Mallard, Mayhan, Boston, Boehmer, Anderson, Parsons.

Row 2. Hender, Crum, Auld, Boston, Butler, Bowman, Flaherty, Rich, Mathison.

Row 3. Spearman, Teague, Valentine, Griffin, McIntyre, Hill, Follet, Wade, Hensel.



217

Row 1. Fox, Strode, O'Dell.

Row 2. Beechinor, Gump, Posey, Mitchell, Dossey, Hartley, Campenelli, Ross, Freiski, McCaw, Dagget.

Row 3. Haase, Benzel, Leonetti, Harding, Plucker, Coft, McFall, Curl, McInturff, Michaelis, Ayres.

Row 4. Cochran, Noble, Gilliam, Whitehouse, Vasowle, Kison, Schaefer, Weill, Pope, Swartz.



301

Row 1. Sanderson, Pringle, Van Atta, Quinn, May, Sams, Knell, Darsch, Lindelein, Barclay, Sarver.

Row 2. Cherryholmes, Vanderpool, Eagon, Stovall, Cunningham, Ward, Henline, Bramlett, Randolph, Pike.

Row 3. Gebo, Lightfoot, Middleton, Boldman, Laufer, Brown, Davis, Williams, Shaw, Holm, Jacky.





302

Row 1. Peterson, Pemberton, Duckworth, Frank, Haas, Weaver, Brunton, Thompson.
 Row 2. Walters, Breen, Munger, Mitchell, McLain, Conery, Williams, Heathe.
 Row 3. Freepons, Hoelscher, Hoffman, Childers, Dunham, Bender, Fingar, Benfield, Roseboro.



307

Row 1. Dickworth, Van Zandt, Downing, Mang, Turnbow, Weed, Elia, Burkhart, Merryman, Fairchild.
 Row 2. Babb, Trout, Foltz, Quinn, West, Shaefer, Rasmussen, White.
 Row 3. Clutter, Froese, Woodhall, McIn, Rader, Goble, Santo, Hopper.

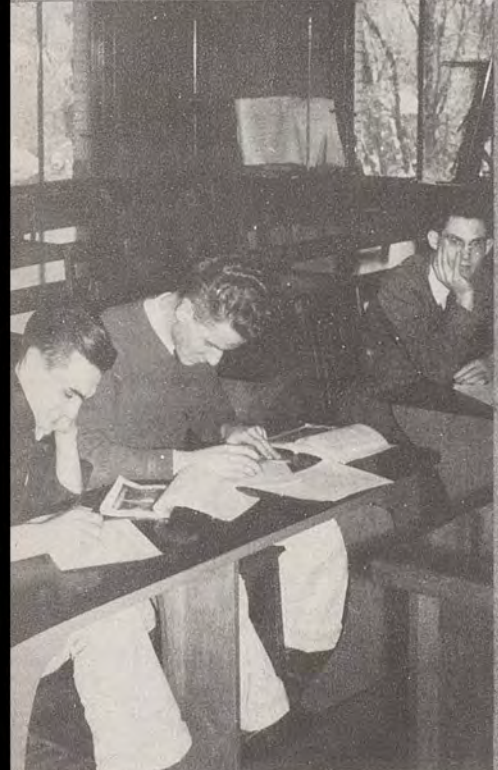


316

Row 1. Wolf, Lanning, Helm-bigner, Wilson, Chandler, Beck, Leeper.
 Row 2. Rimpler, Murphy, Apple, Morland, Carter, Finnegan, Shinbo, Mang, Grassi, Lindgren.
 Row 3. Klavano, Tompkins, Hoover, Chapman, Smith, Burdin, Dorris, Sandahl, DeBoer, Lindberg.
 Row 4. Cochran, Harrison, Livengood, Purcell, Braden, Long, McCullough, McCassen, Daniels, Anderson, Palmer.



Row 1. Maxson, MacDonald, Sporeleder, DeFord, Smith, Pollard, Evander, Hagen, Destito, Burgett, Muirhead, Riddell,
 Row 2. Foster, Krebs, Frank, Hatcher, Winn, Bogle, Dalton, Milliron, Young, Anhorn, Isitt.
 Row 3. Elliott Ausman, McFall, Thourpe, Otto, Mulhair, Mortamer, Kidwell, McLoughlin, Dotsen, Allen, Campbell, Watkins.



"THE HOW" OF IT
DEEP CONCENTRATION

LET'S EAT
THE BOYS POSED FOR THIS
FOOD!

Leader -





Ship



GIRLS' FED. KID PARTY
MAYOR WEST ADDRESSES BOYS ASSEMBLY
GETTING READY

PLAYDAY—1941
"DEARLY BELOVED"
PRIZE WINNERS



Left to Right:

KIRK DRUMHELLER
President
RICHARD GARRETT
Vice-President
VIRGINIA SHICK
Secretary
BOB SPOHN
Treasurer



COURT

Row 1. Barton, Maier, Hoover.
Row 2. Mock, Farmer, Maiden, Yenney.



CABINET

Row 1. Schessler, Harding, Barclay, O'Dell, Coyle.
Row 2. Garret, Kight, Gard, Shick, Struthers, Copeland.
Row 3. Drumheller, Spohn, Jensen, Howell, Farmer, Flaherty.

The Students Govern Themselves

Kirk Drumheller was elected president of the student-body for the year 1941-42. Richard Garret was made vice-president, Virginia Shick, secretary, and Bob Spohn, treasurer. The students chose a yell team consisting of Shirley Barclay, Barbara Hall and Jim Harris.

The following students were appointed by Kirk to serve on the student cabinet: Sam Farmer, commissioner of justice; Martha O'dell, commissioner of assemblies; Dean Jensen, commissioner of buildings and grounds; Art Schessler, commissioner of stage; Jack Howell, commissioner of inter-school relations; Dorothy Gard, commissioner of organization; LaVerne Harding, commissioner of finance; Margaret Jean Kight, commissioner of hallways; and Dave Flaherty, commissioner of fire-control. The yell team chose Shirley Barclay as their representative to the cabinet. Helen Coyle, president of the Girls' Federation, Tom Copeland, president of the Boys' Federation, and Eugene Struthers, editor of the Journal also served on the cabinet.

One of the major improvements was the refinishing and furnishing of a former locker room. This room was turned over to the students and remodeled under the guidance of the cabinet. It is to be used in the future as a student court room and the office of the Associated Students.

The Student Book Store, selling school supplies, was started in the second floor book-room. LaVerne Harding, as commissioner of finance, managed the Book Store. As a result of LaVerne's conscientious work, this establishment showed a profit of approximately \$130 for the year.

The parent's back-to-school-night was supported by the students. An assembly was held in the auditorium and later in the evening guides directed parents to different departments where exhibits were displayed. Later in the evening refreshments were served by a committee of girls in the school cafeteria.

Adele Harris, Kirk Drumheller, Helen Coyle, and Tom Copeland represented Wa-Hi at the twenty-first Student Leader and Journalist conference held at the University of Washington. Miss McCormick chaperoned them on their four-day visit.

Two parties were held for visiting basketball teams with a great amount of success. Games and dancing were enjoyed at the homes of cabinet members. Refreshments were served at the end of the evening.

The students sponsored a drive to sell athletic season tickets to the citizens of Walla Walla. This served as advertisement, surety of part expenses and general good-will.

At the suggestion of Mr. Lobaugh, students began the development of codes of conduct for games, halls and assemblies.

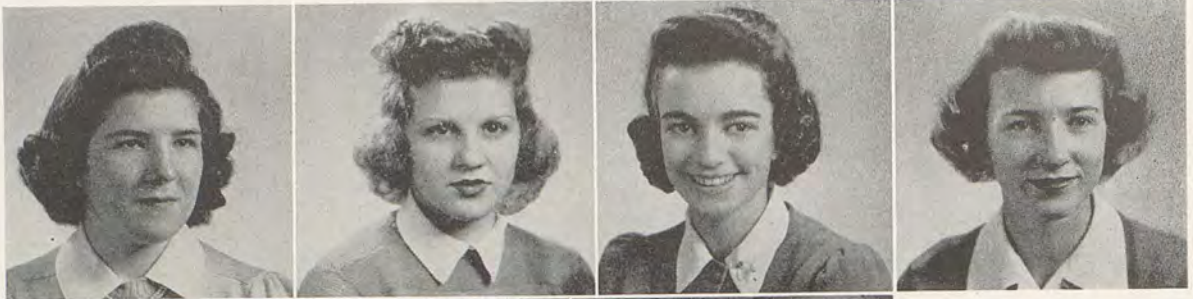
Richard Garret, as vice-president took over the legislative assembly and established a much more accurate and complete system of recording its activities than was formerly used.

The yell staff operated with exceptional efficiency and kept the morale of the student body at a very high level throughout the year by directing pep assemblies, pep rallies and downtown advertising. An outside pep assembly was one of the team's experiments.

Martha O'dell planned and organized the assemblies, providing an upperclass or a general assembly for nearly every week of the school year.

An amendment was made to the constitution, making the student fire chief a commissioner and a member of the cabinet.

Toward the end of the year, two open forum discussions were held in the auditorium during the noon hour. These were planned partially for entertainment and partially for education in the hope that they would be continued in the years to come.



GIRLS' FEDERATION

Top Row

HELEN COYLE
President

PATTY MORRISON
Vice-President

BETTY ALLISON
Secretary

HELEN ZAHL
Treasurer



SECOND SEMESTER CABINET

Upper Left

Row 1. Allison, Zahl, Kison, Campbell, Moulton, Renick.

Row 2. Yeend, Coyle, Autrey, Goodman, Barton, Throupe.

Row 3. Simmons, Taylor, Renner, Morrison, Bailey, McKellips, Fondahn.

FIRST SEMESTER COUNCIL

Lower Left

Row 1. Moulton, Ferris, Wirth.

Row 2. Burkhart, Knowles, Neel.

Row 3. Swanson, O'Hearn, McFarland.

SECOND SEMESTER COUNCIL

Upper Right

Row 1. Mathison, Hooper.

Row 2. Winget, McFarland.

Row 3. Moulton, Pfaffle, King, Mulhair.

FIRST SEMESTER CABINET

Lower Right

Row 1. Moulton, Ferris, Allison, Hall, Mathison, Coyle.

Row 2. Taylor, Woods, Zahl, Timm, Deare, Tompkins.

The Girls Get Together

To the Girls' Federation this year has truly been a memorable one. The federation's principle is to create a friendliness and a closer relationship among the girls. This was accomplished through the splendid cooperation of every girl in the school.

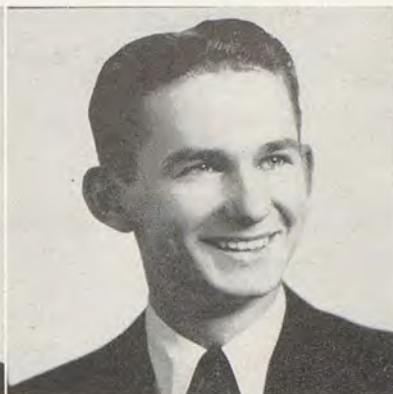
The assemblies have consisted of a very helpful talk by Mrs. Maris, Dean of Women of Oregon State College, talks by two well-known career women of this community, Mrs. Alice Fisher, and Mrs. Parker Barrett, and an open forum and community sing which were ably led by Dora Pratt, Martha O'dell and Helen Yeend.

For the social part, a kid party, a funny paper party and afternoon frolics were held in the girls' gym. The Annual Teas were given in March for the senior girls and their mothers. The socials were carried on throughout the year under the leadership of Norene Posey and Nadine Taylor. To finish the social affairs for the school year, the girls gave a party for the incoming freshman girls.

An important phase of the Federation activities was the party given for the girls transferred from other high schools. This gave the girls an opportunity to become better acquainted with one another and to join in furthering the betterment of the principles of the Federation.

Another important phase of the Federation this year was the participation of Wa-Hi girls in two conferences; one in Seattle, Washington, and the Tri-State conference held at La Grande, Oregon. These gave the girls an opportunity to talk over ideals and problems and to discuss improvement of the Girls' Federation.

As its gift to the school, the Girls' Federation is continuing its work on the lounge. Many improvements have been made and now the lounge plays a very important role in giving the girls a place to meet and discuss their problems and enjoy the friendship of one another.



BOYS' FEDERATION

TOM COPELAND, President
DANNY NEW, Vice-President
LESLIE STONEMAN, Sec.-Treas.

COMMITTEE CHAIRMEN

Jensen, Ludwigs, Smedes, Howell, Stevens



The Boys Stress Service

The most praiseworthy achievement of the Boys' Federation has been the organization of the Knights of the Trident, a service group. Members of the Knights have been helpful in furnishing ticket takers for all high school football, basketball and baseball games for the year.

When parents visited school in last fall's open house program, Knights of the Trident served as guides to aid the parents in finding the rooms and teachers they wished to see. They have assisted the yell staff in the arrangement and presentation of several pep assemblies.

At the Chief Goodfellow assembly, before Christmas, these boys took charge of the commodities that were turned in by students for admission. Members of the group have been very active in defense stamp sales and collection of waste paper for government use. They also passed out handbills advertising the all-school play "The Thirteenth Chair."

The Annual Wa-Hi play day, held in conjunction with the R.O. T.C inspection on May first, is being completely arranged by the Knights. It was handled last year by the Equites Club who won a trophy for their capable management, giving the Knights of the Trident something to aim at.

The Boys' Federation performs many other acts of service and courtesy. A committee checks on the entrance of all new boys in school and then sees that the boys have an easy time in becoming acquainted with the school. One feature of this service is the introduction of all new boys in the first boy's assembly after they have entered school.

The Boy's Federation football trophy, offered to the grade school winning the city championship in touch football, was won this year by Green Park.

New mirrors in the boys' rooms were furnished and installed by the Boys' Federation.

The organization has secured outside employment for more than one hundred boys during the year. A new feature of the current term has been a survey of the summer plans, employment preferences and past work experience of all the boys in school.

Boys' assemblies furnish periodic sessions of education and entertainment for Federation members. They are usually topped off by several numbers by one of the school's swing orchestras. Mr. Anderson serves as adviser to the organization.



ANNUAL SALES STAFF

- Row 1. Clara Rich, Ethel Mae Allen, Donna Moulton, Norene Poscy, Dorothy Woods, Pat Barton.
 Row 2. Don Lockhart, Helen Zahl, Betty Flaherty, Ruth Fahey, Sherman Mitchell, Eleanor Stokes, Shirley Buchler, Auralice Loney, Pat Snyder, Burton Starr.

ANNUAL STAFF

- Row 1. Ruth Fahey, Dorothy Woods, Helen Zahl, Pat Barton, Eleanor Stokes.
 Row 2. Jack King, Burton Starr, Kenneth Torrey.

RUTH FAHEY,
Editor

DOROTHY WOODS
Associate Editor

HELEN ZAHL
Sales Manager

ELEANOR STOKES
Picture Editor

They Keep the Records

The 1942 Royal Blue comes to you in the face of growing scarcities of paper and other publishing materials such as films, photograph paper, copper and zinc.

The successful sales campaign in the fall of 1941 brought 660 orders for the yearbook. At the conclusion of the campaign a staff working under Ruth Fahey, editor, and Dorothy Woods, assistant editor, began planning the book and working out picture schedules.

Rising publication costs have resulted in some retractions from last year. Rather than increase the selling price, the staff chose to cut down on the total number of pages. However, they believe that you will find that none of the activities of the school have been slighted.

Besides keeping a faithful record of the year, the annual staff has contributed in other ways to the improvement of Wa-Hi. The most noticeable change was wrought in the Annual room. A space approximately 12 feet square was enclosed and made into the Royal Blue office. Materials and labor for the building of the office were paid for from Royal Blue funds. In addition, the organization contributed twenty-five dollars to the scoreboard fund. When the school district purchased the scoreboard, the money was turned over to the associated students for general school improvement.

Many Wa-Hi students have made noteworthy contributions to the 1942 Royal Blue. Bob Naimy and Richard Nightingale were official student photographers, furnishing nearly all of the informal pictures for the book. Doug Crawford and Vernon Zier wrote much of the sports copy. Kirk Drumheller, Helen Coyle, Tom Copeland, Charlotte Wirth, Mary Lanckton, Stanley Maiden and Gloria Woodhall also were especially helpful.

Staff appointments for next year probably will be announced by W. J. Goodrich, Royal Blue adviser, soon after the opening of school next September.



JOURNAL STAFF

Row 1. Hamlin, Tate, Danielson, Fleck, Schmidt, Ludwigs, Struthers, Fouts.
 Row 2. Kight, Robinson, Pauly, Diehl, McIntosh, Spohn, Dull.
 Row 3. Daniel, Boule, Nelson, McKinley, Holderman, Thomsen, Laidlaw, Crawford

Eugene Struthers, Editor.

Adele Harris, Asst. Editor.

AD STAFF

Row 1. Boule, Henline, Fanning, Day, Daniel.
 Row 2. Nelson, Thomsen.

Sam Farmer, Business Mgr.

They Spot the News

The Wa-Hi Journal, official student newspaper, came through the school year without lowering the standards which earned it a rating of national first class honors. Editors Eugene Struthers and Adele Harris started the paper on its customary semi-monthly basis, but succeeded frequently in producing it at weekly intervals. A major financial crisis arose when, during the year, entrance into the war resulted in much loss of advertising support. A strong drive for new advertising, however, made it possible for the paper to finish the year on a bi-weekly basis.

An active staff of approximately 50 students continued the policy of reporting all high school news in addition to giving controversial issues publicity and editorial comment.

One of the Journal's contributions to school activities is its weekly preparation of a radio news broadcast for the KUJ high school program.

Although traditionally a busy group, the staff took time in December, soon after the Pearl Harbor incident, to hold a Blackout Dance, the first of its kind in Wa-Hi, at which defense stamps were submitted for tickets, and air-raid shelter decorations were used.

Plans for 1942-43 are already underway under the leadership of co-editors Bill Fouts and Evelyn Kludas. Already preparing to overcome difficulties of publishing under wartime restrictions, they are working out a system of newspaper production designed to give Wa-Hi a better newspaper oftener. Jack Dull has been named by James Stevens, adviser, to succeed Sam Farmer as business manager.

WA-HI IS ORGANIZED

ARTISTS OF HOME ECONOMICS

MINNIE BLAYLOCK, President
SARAH FRANK, Secretary

FRENCH

PAT KING, President
NORMA ANSPAUCH, Secretary

GIRLS' SPORTS CLUB

MARY LANCKTON, President
BLAINE BURGESS, Secretary

CAMERA CLUB

RICHARD NIGHTINGALE, President
BILL ONSTINE, Secretary

GERMAN

BUFFY OLDRIDGE, President
SYLVIA BECK, Secretary

GOLF CLUB

HOWARD LUDWIGS, President
HAROLD BRISTOL, Secretary

EL ADREA

DOT GARD, President
MARIAN McCAULEY, Secretary

GIMMEL TETH

VIRGINIA SHICK, President
JOAN VALAER, Secretary

KNIGHTS OF TRIDENT

GERRY MILLER, President
MAX RENICK, Secretary

EQUITES

JIM ESARY, President
JOHN COLLIER, Secretary

GIRLS' CLASSICAL CLUB

LORRAINE MAUGHAN, President
ELAINE HARVEY, Secretary

MATH CLUB

LESLIE WENDLER, President
DONNA MOULTON, Secretary

FUTURE FARMERS OF AMERICA

STANLEY MAIDEN, President
ERNEST TUCKER, Secretary

GIRLS' RIFLE TEAM

ANN HOGUE, President
HULDA KISON, Secretary

SKI CLUB

NORMAN SMEDES, President
HARRY SMEDES, Secretary

TROUBADOUR CLUB

JIM HARRIS, President
EDNA SMITH, Secretary

W. W. CLUB

JIM MERKLE, President
DICK JACKSON, Secretary



HOME ECONOMICS

Row 1. Greene, Blaylock, Harding, Taylor, W. Campbell, J. Campbell, Harris.
Row 2. Woodard, Fought, Robinson, O'Hearn, Trumble, Frank, Kralman.



CAMERA CLUB

Row 1. Otis, Gardner, Dotson, Comstock, Kimmerly, Shaw, Munger.
Row 2. Dassey, Nather, Ringhoffer, Boldman, Burnham, Ary, Reynolds.
Row 3. Naimy, Nightingale, Torrey, Shirrod.

EL ADREA

Row 1. Janice Gard, Harris, Huddleston, Torrey, Winget, Chernis, McCauley, Armstrong
 Row 2. Kludas, Peifer, Rader, Fleck, Quackenbush, Cannon, McGrew, Garrett.



EQUITES

Row 1. Fox, Drumheller, Conkey, Benefiel Stevens, Berney Nettleship, Stone.
 Row 2. Roseboro, Collier, Ludwigs, Ankeny, Fletcher, Garrett, Fisher, Lindelein.
 Row 3. Mitchell, Thomas, Holderman, Stoneman, Esary, Howard, Nelson, Farmer.



FUTURE FARMERS OF AMERICA

Row 1. Tucker, Zwanzig, Follert, C. Maiden, Brunton, Beechinor, Barclay, Charlo, Macarroni, Jack Walters, Murphy S. Maiden, Mr. Lybecker, Graf
 Row 2. Earl Smith, Wirth, D. Tomlinson, Elmer Smith, Swartz, Records, Downey, V. Whiteley, Shelton, D. Ovens.
 Row 3. D. Whiteley, O. Page, Jessee, DeVaney, Quesenberry, Romlne, Grote, Stroup, Yennay, McInturff.
 Row 4. Jeglin, Dixon, Mohr, E. McDowell, Southern, Breen Parsons, Frazier.
 Row 5. G. McDowell, Shepherd, Landoni, Garrett, McIntosh, Loney, Jackson, W. Smith.



FRENCH CLUB

Row 1. King, Cation, Goodman.
 Row 2. Kight, Smith, Anspauch.



GERMAN CLUB

Row 1. S. Beck, E. Luckey, Cunningham, Rink, B. Luckey, Schmidt, V. Beck.
 Row 2. Wren, Knaus, Rothenberger, Zigman, Ellsworth, Zier, Edinger, Froese.





GIMMEL TETH

Row 1. Croxdale, Carson, Morrison, Timm, Mathison, Hooper, Loney, Valaer.
 Row 2. Hamm, O'dell, Judy, Romine, Willman, Baxter, Shick, Humphrey, Barclay, Adams.



GIRLS' CLASSICAL CLUB

Row 1. Kelso, Maier, Johnson, Sporleder, Millard, Loney, Walters, Pauley, Lenfesty.
 Row 2. Teague, Maughan, Harvey, Hoover, Fahey, Batey, Nordstrum, Ogden, Woods.



GIRLS' RIFLE TEAM

Row 1. Timm, Gordon, Winger, Kison, Humphrey, Robinson, Winkle, La Douceur, Allison Ferris, Woods.
 Row 2. Gallaher, Stokes, Rothenberger, La Douceur, Gilkerson, Flick, Anspauch, Smith, Fletcher, Beck, Smith, Hulbush, Hogue, Crewse.



GIRLS' SPORTS CLUB

Row 1. Binbender, Yeend, Ferris, Wirth, Reiswig, Gettman, Burgess, Barney, Spearman.
 Row 2. Coyle, Robinson, Knowles, McFarland, Barton, Stebner, Wolfe, Lanckton.



GOLF CLUB

Mr. Anderson, Ludwigs, Nelson, Bristol, Amen, Erdman.

KNIGHTS OF THE TRIDENT

Row 1. Miller, Ross, Renick, Spence, Schessler, Ringhoff.
 Row 2. Jones, Howard, Jones, Marshall, Esary, Cation, Mr. Anderson.



MATH CLUB

Row 1. Fritzler, Fisk, Moulton, Schatzel, Neel, Noland, Fiedler, Myers.
 Row 2. Bergevin, Hogue, Dirks, Wendler, Miller, Klicke.
 Row 3. Anderson, Melitz, Buck, Gerking.



SKI CLUB

Row 1. Swenson, Ludwigs, Thompson.
 Row 2. Schiffman, Bristol, Nelson, Perkins.



TROUBADOUR CLUB

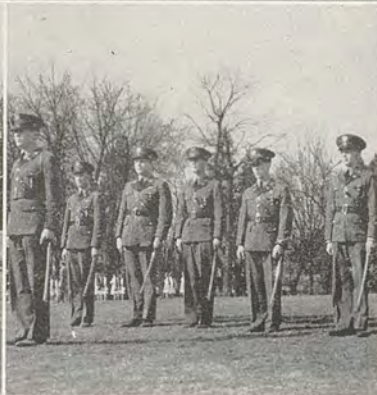
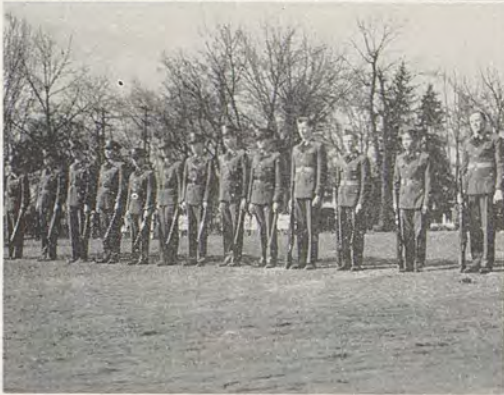
Row 1. Loney, Smith, Weaver, Davis.
 Row 2. Harris, Stokes, McIntosh.



W. W. CLUB

Row 1. Owen, Fouts, Erdman, Clarke, Engel, Meinhart, Jackson.
 Row 2. Haines, Conkey, Dickinson, Garrett, Melton, Spohn, Lawrence, Dyer, Mitchell.
 Row 3. Bischoff, F. Gilliam, Smedes, Stone, Morehouse, Henderson, Steinbeck, Hansen, Page.
 Row 4. Winters, Garland, Coultas, J. Gilliam, Dacres, Demory, Bristol, Henderson, Crawford, Turley.





COLOUR GUARD—Billy Ziemann, Danny New, Stanley Miller, Robert Fiedler.

RIFLE TEAM—Martin, Winters, Copeland, Corn, Emigh, Dickey, McIntyre, Bristol, Ellsworth, Miller, Garrett, Boylan, Shinbo, Yenney.

OFFICERS—Logmire, Martin, Henderson, Copeland, Tomlinson, Struthers, Dacres, Daniel, Haines, Doak, Jackson, Garrett, Gradwohl, Winters, Melton, Backlund, Miller, Corn, Zier, Emigh, Ellsworth, Dickey, Bristol, McIntyre, Howell, Barmer, Ringhoffer, Farmer

COMMANDER AND STAFF—Longmire, Martin, Emigh, McIntyre, Dickey, Ringhoffer.

MAJOR PORTER
SERGEANT HUBBS

Future Officers

Our Unit of the War Department's Reserve Officers' Training Corps has completed another satisfactory year. The results of the administrative inspection made by a representative of the Commanding General, Ninth Corps Area, were very gratifying, and we are confident this record will be continued in the tactical inspection held near the end of the school year.

The battalion, band, rifle teams and sponsor company were continued as in the past. During the current year more stress has been laid upon the following; requiring cadet officers to instruct and handle classes, thereby giving training in leadership; broadening the theoretical course to include mapping, etc; demonstration of late model military equipment, as weapons, transportation and gas defense; affording the band more opportunity for infantry instruction.

The cadet corps and sponsor company have lent their aid to the community by participating in many outside activities as Armistice and Army Day Parades, drives for veteran and benevolent organizations. All their efforts were rewarded with success and commendation.

As the war goes on, the attention of the community is focused more and more on the unit. Former members of the Corps are mentioned in dispatches, and often write of the benefit they derived from their "Squads East and West" at Wa-Hi.

The Honor Roll of this year's cadets who have joined the armed forces to date includes the following:

Stuart McIntyre	Robert Clark	Gayle Boyer
Leland Reed	Dan Shephard	Bob Simpson
Eugene Giberson	Ralph Boyer	Art Butherus

Their comrades and classmates wish them luck.

COMPANY "A"

Captain Tom Copeland
1st. Lt. Gerald Gradwohl
2nd. Lt. Wm. Haines
2nd. Lt. Jack Melton
2nd. Lt. Dave Dacres
1st. Sgt. Homer Wisher



COMPANY "B"

Captain Eugene Struthers
1st. Lt. Delbert Zier
2nd. Lt. Lloyd Ellsworth
2nd. Lt. Richard Jackson
1st. Sgt. Kenny Thomas



COMPANY "C"

Captain George Daniels
1st. Lt. Guye Henderson
2nd. Lt. Gerry Miller
1st. Sgt. Raymond Fields



COMPANY "D"

Captain Irving Winters
1st. Lt. Bob Corn
1st. Lt. Dick Backlund
2nd. Lt. Harold Bristol
2nd. Lt. Don Tomlinson
1st. Sgt. Glenn Henderson



BAND

Captain James Doak
Assn. Richard Garrett
1st. Lt. Richard Flomer
2nd. Lt. Jack Howell
1st. Lt. Sam Farmer (Drum Major)
Tech. Sgt. Leslie Wendler
Tech. Sgt. Dean Jensen



SPONSORS

Captain Pat Baxter
1st. Lt. Helen Zahl
2nd. Lt. Shirey Barclay
1st. Sgt. Helen Coyle





Top Left—Potato Judging Team; Krebs, Smith, Zwanzig, Follett.

Top Right—Grand Champion steer, raised and shown by Stan Maiden.



Bottom Left—Don Tomlinson, U. P. Scholarship winner.

Bottom Right—Stock Judging Team; Smith, Ovens, Frazier, Follett, Maiden.

Future Food Producers

Walla Walla Chapter of the Future Farmers of America has a membership of 79 boys, which is a small portion of this vast organization, numbering 250,000 boys, and extending from Washington to Puerto Rico and from Maine to Hawaii.

Our Future Farmer department is under the direction of Mr. Chester Lybecker, who has his hands full doing all the teaching since Kenneth Killingsworth went to the army.

The boys are taught various things in the agriculture course. The first year they are taught animal husbandry, something about different kinds of livestock. The second year they get an extensive study on crops and soils, and also learn how to mix a balanced ration for an animal. The third year is given over to part-time shop and forage grass study. The fourth year is devoted entirely to shop, and the boys become proficient in the different fields, such as welding and wood work.

The shop has just acquired, during the last school year, an electric welding outfit. Some of the products that the boys turn out from that shop and their ability to do so are shown by their building of the scale trailer which we use, and also the stock trailer.

Another highlight in which this F.F.A. Group is interested, is the Junior Livestock Show in Spokane, that was held May 6-8. At the time this article was written, it was too early to put in the winners, but this is the sixth year Walla Walla has entered. We have won Grand Champion Steer four years straight. Wa-Hi was the first school to exhibit spring lambs, lambs born after December 15 preceding the show. Three years ago we had two boys who exhibited spring lambs. Today all lambs shown are spring lambs. Wa-Hi has exhibited two Reserve Champion lambs at Spokane. We also had Champion fat hog one year.

Where Wa-Hi F. F. A. excels again, is in its stock judging teams. In 1939 we took the

highest honors at the Pacific International in Portland. We have also had two alternates on the Washington State Stock Judging teams, one in 1938, and one this last year.

Future Farmer organization is divided into five different steps of achievement. They are: (1) Green Hand. which is the beginning degree, (2) Future Farmer. after you make \$25 on your project. Boys are usually sophomores when they attain this step. (3) State Farmer. a boy must earn \$250 on projects, be in the upper 40 per cent of his class, be able to conduct a 45-minute discussion, and pass a test in parliamentary procedure, as well as in other phases concerning his project. There are approximately 60 in the State of Washington each year. (4) American Farmer. This is the highest degree. A boy must have earned \$500, and must be ranking among the first two or three State Farmers. The State of Washington is allowed only two American Farmers. (5) Star Farmer. From the American Farmers of each district is selected one Star Farmer. This is limited to one boy from each of the four regions in the United States. To attain this one must be outstanding in projects, scholarship, activities and leadership.



Row 1. Virgil Whitley, Estell McDowell, Dan Shepherd, J. DeVaney.

Row 2. John McInturff, Chub Maiden.

Row 3. Gail Records, Darrell Whiteley.



**RADIO ANNOUNCERS AND
NEWSCASTERS**

- Row 1. Lois Waldron, Helen
Yeend, Doris Deare.
Row 2. James Andersen, Sam
Farmer, Jack King.

DEBATERS

- Row 1. Kimmerly, Harris,
Chriscoe.
Row 2. Ross, Miller, Farmer.
Row 3. Michaelis, Cummins.

THEY SPEAK FOR WA-HI

The nine members of the debate squad from Wa-Hi started the season at Rosalia by losing both debates there. The next competition Wa-Hi entered was a non-decision debate held at Pasco. In the debates with Clarkston here Wa-Hi won one debate and lost one. The season was continued at Asotin with Asotin losing both debates to Wa-Hi. Wa-Hi repeated this performance by winning the two debates with St. John here.

With a score of three debates lost and five debates won, Wa-Hi was eligible to go to the State Debate Tournament held at Washington State College in the spring, having won more than one-half of their scheduled debates for the season.

The State Debate Tournament has been held every year for the last ten years but this is the first time Wa-Hi was represented there. Wa-Hi entered the traditional debate and cross-questioning debate staying in the competition till the last round and progressing favorably. Lack of time prevented the reading of the decisions given at the State Debate Tournament.

For experience, freshmen debaters met Pendleton in two non-decision debates, one being held at Wa-Hi and the other at Pendleton.

Wa-Hi entered a debate tournament at Lewiston so that everyone on the debate team might get some additional experience before the end of the season. No decisions were given there.

Educational and entertaining weekly radio programs were given under the supervision of Miss Pfeiffer this year.

"Wa-Hi in Action" presented a number of musical programs. The A Cappella choir and the girls' glee club directed by Mr. Mieger and the orchestra directed by Mr. Tilley furnished musical talent for the programs.

Military restrictions placed on radio programs because of the war required that the French play directed by Miss Morton be cut off the air.

Quiz programs which some of the classes had given and others planned to give were no longer accepted in accordance with military regulations.

Accepted programs included a demonstration given by the debate team, a timely program on "What to do in case of Gas" given by Mr. Reed's chemistry classes, and an interesting and educational dramatization of school life during the Colonial period given by Mr. Welch's American history class.

Newscasters complete the fifteen minute programs with news about Wa-Hi supplied by the Journal staff.

The Dramatic Touch

Wa-Hi offered two plays for public entertainment during this term. The senior play, "Girl-Shy," was presented under Miss Dorothy Byers' direction on November 14. March 5 and 6 were the dates for the all-school play, "The Thirteenth Chair," directed by Miss Ann Hovila.

The time in "Girl-Shy" was commencement. Tom (Richard Flomer) was girl shy. Babs (Edra Hilbert) traded places with the young lady who cleaned Tom's apartment in order to meet Tom. Her masquerade created a mixup that was ironed out through the help of Tom's definitely not shy roommate Oke (Jim Wamble).

Mysterious tappings, the calling back of the spirits of murdered men and falling knives lent a chill to "The Thirteenth Chair." In attempting to find the murderer of his friend, Wales (Ken Jones) was killed during a seance called by Madame La Grange (Barbara Hall.) Inspector Donahue (Sam Farmer) aided by Sergeant Dunn (Bob Freeman) endeavored to solve the case. He accused Helen O'Neill (Charlotte Wilson), daughter of Madame La Grange of having committed the crime. Aided by her daughter's fiance (Norm Smedes) the medium solved the case.

CAST OF "GIRL-SHY"

Senior Play
Norene Posey, Jim Wamble,
Edra Hilbert, Richard Flomer,
Martha O'dell, Ross McIntosh,
Miss Byers, Barbara Hall,
Tom Copeland, Carma Math-
ison, Leslie Wendler, Elaine
Harvey, Edwin Edinger, Doris
Deare.



CAST OF "THE THIRTEENTH CHAIR"

Sitting: Wilson, Timm, Hall,
Lanckton, Kidwell, Porter,
Piersall.
Standing: Fiedler, Hill,
Smedes, Jones, Ludwigs, Ren-
ick, Nelson, Ruff, Farmer,
Freeman.



MISS HOVILA

MISS BYERS



Row 1. Mr. Tilley, Howard, Crites, Comstock, Dudley, Sporleder, Hinder, Timm, Reese, Kann, Davis, Williams
 Row 2. Ary, Flomer, Howell, Jensen, Ludwigs, Wendler, Doak, Farmer, Berney.



CHORUS

Row 1. Pfaffle, Leeper, Von Nahem, Austin, Walker, Harvey, Timm, Gard, Scott, Reising, Spence, Archer, Zier, M. Vanderpool, Murphy, Anspaugh.

Row 2. Willaby, Barney, Holderman, Lucky, Thomas, Woodhall, Bowman, Carson, Marshall, Bennett, Knowles, Hall, Otis, O. Follett, D. Vanderpool

Row 3. Pascavis, Dirks, Grote N. Follett, Beechinor, Melton, McEligot, Torrey, Jackson, Kleinbock, Hauck, Umphres, McLaughlin, Simmons.

Row 4. Davin, Spence, Sabadie, MacIntosh, Berry, Schaefer, Johnson, Langton, Holderman, Schessler, Crawford, Boule, Marr.



THEY LEARN TO APPRECIATE

"Music for every child, and every child for music." To this end the Wa-Hi choral department has attempted to lay the basis of music appreciation. The department has attempted to lay the basis of music appreciation. The department believes that this ability comes first of all from the performance of music. Thus, the work of various choruses during the past year has been aimed at giving every student the ability to appreciate music through performance.

The mixed chorus, girls glee club and boys' glee club participated in the presentation of a Christmas program in the form of a Christmas song and Tableau service. The program was presented twice, once for the students and once for the public.

A concert of choral music for the entertainment of the inmates of the penitentiary gave music pupils further opportunity for participation. Other appearances of the choral groups have been in the annual spring choral concert on May 6, and before the Kiwanians, Lions, Chamber of Commerce and Junior Chamber of Commerce. The girls' glee club and the A Cappella choir have appeared in two fifteen-minute broadcasts over radio station KUJ. The choruses also led a community sing, conducted by Mr. Mieger, in a general assembly.

Mr. Bernard Mieger, the director, attended by invitation the twenty-seventh meeting of the Music Educators National Conference in Milwaukee, Wisconsin this spring. There he took part in two panel discussions and gave a demonstration on elementary school choirs.

The choral department hopes to offer an expanded program in the coming years with all classes to be held during school hours.

The legislative assembly lately has voted the appropriation of one hundred dollars to the choral department for the purchase of choir stoles.

A CAPPELLA CHOIR

Row 1. Pfaffle, Zier, Otis, Croxdale, Porter, Johnson, Vanderpool, Scott, McLoughlin, Knowles, Dotson, Lackton.

Row 2. Knauf, Meyer, McCaslin, Harvey, Binbänder, Rimbey, Otto, Lamb, Piersall, Roff, Spence, Hall, Archer.

Row 3. Woodhall, Autrey, Piersall, Hartley, Buck, Giberson, Timm, Gard, Schaefer, Torrey, Kleinbach, Umphres, Crawford.

Row 4. Davin, McIntosh, Sebadie, Follett, Berry, Jackson, Melton, Bank, Schoessler, Marr.



GIRLS' GLEE CLUB

Row 1. Duckworth, J. Gard, D. Anderson, Winn, C. Anderson, Myers, Kison, Chriscoe, McKillip, Lackton.

Row 2. Falt, Johnson, Foltz, LaDouceur, Destito, Piersall, Stalcup, E. Elia, Stinnett, Dotson, A. Elia, Roff, Shigley, Knudson, Mathison.

Row 3. Porter, Croxdale, Lay, McCaslin, Autrey, Hartley, Buck, Jesse, Bird, Binbänder, Knowles, Chase, Burnet, Von der Ahe, Santo, Knouf.

Row 4. Rehberg, D. Gard, Giberson, Timm, Piersall, Lamb, Otto, Rimbey.



BOYS' GLEE CLUB

Row 1. Spence, Follett, Davin, Sebadie, Holderman, Beechinor, Melton, Kleinbach.

Row 2. McIntosh, Schaefer, Berry, Jackson, Umphres, Crawford, Schoessler.

Row 3. McElligot, Grote, Johnson, Torrey, Hauck, Langton, Boule, Marr.



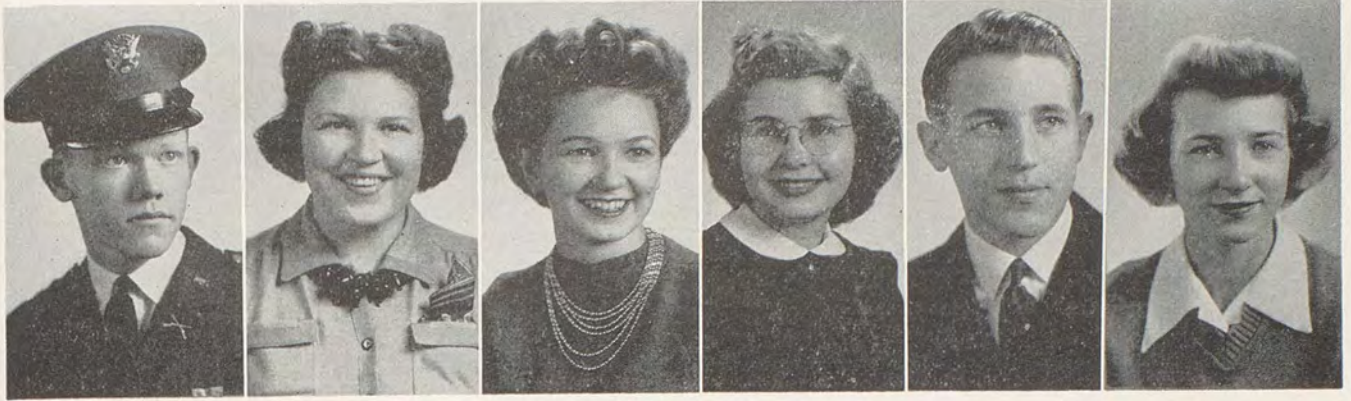
National Honor Society

HONOR



SOCIETIES

Quill and Scroll



NATIONAL HONOR SOCIETY

Recognized for outstanding leadership, scholarship and character, thirty-one graduating seniors and thirteen juniors were elected to membership in the National Honor Society. Graduating seniors who were chosen too late in the year for their pictures to be included here are Florence Chriscoe, Gerald Gradwohl, Asta Skoubo, Frances Moulton, Peggy Davis, Bill Portch, Eleanor Arbin and Barbara Smith.

Parents of old members and initiates were invited to the organization's first initiation of the year last fall. Spring initiation ceremonies were combined with a formal banquet for the Society's social highlight of the year.

Chief activity of the group has been the compiling of lists of the present names and addresses of all Wa-Hi graduates. The lists were used in informing all alumni of the projected celebration of the graduation of the fiftieth class in Wa-Hi history.

N. H. S.

Row 1. Binbender, Deare, Drumheller, Fahey.

Row 2. Farmer, Ferris, Fondhan, Gard.

Row 3. Garrett, Harvey, Harris, Heric, Howell.

Row 4. Kight, King, Maughan Reser.

Row 5. Robinson, Timm, Yeend, Zahl.

QUILL AND SCROLL

Quill and Scroll, an international high school journalistic society, was reorganized locally this spring with Lorraine Maughan, Adele Harris, Helen Zahl, Ruth Fahey, Eugene Struthers and Sam Farmer charter members.

This year, as they did two years ago, these people have as their chief project the sponsoring of the publication of the high school literary magazine, the Scroll. Actual work of editing the magazine was done by an editorial board elected by students of all the English classes. Lois Waldron, Richard Nightingale, Pat King, Gerry Miller and Eugene Soper make up the board.

Struthers, Fahey, Harris, Maughan, Farmer, Zahl



OUR VERSION OF "THE THIRTEENTH CHAIR"

- 1: Ah! we know. It's a triangle
- 3: Where'd she go?
- 5: Is that the girl? What happened?

- 2: Now, who's this pointing the accusing finger?
- 4: You'll pay for this! You drove her away.
- 6: Hey, now look! We were too confused. Had to see the play to get straight.



BOARD OF STRATEGY—DACRES, TOMLISON

RIFLE PRACTICE—WINTERS, BRISTOL, CORN

DOG FACE—LT. COL. LONGMIRE

BLOND GRADWOHL

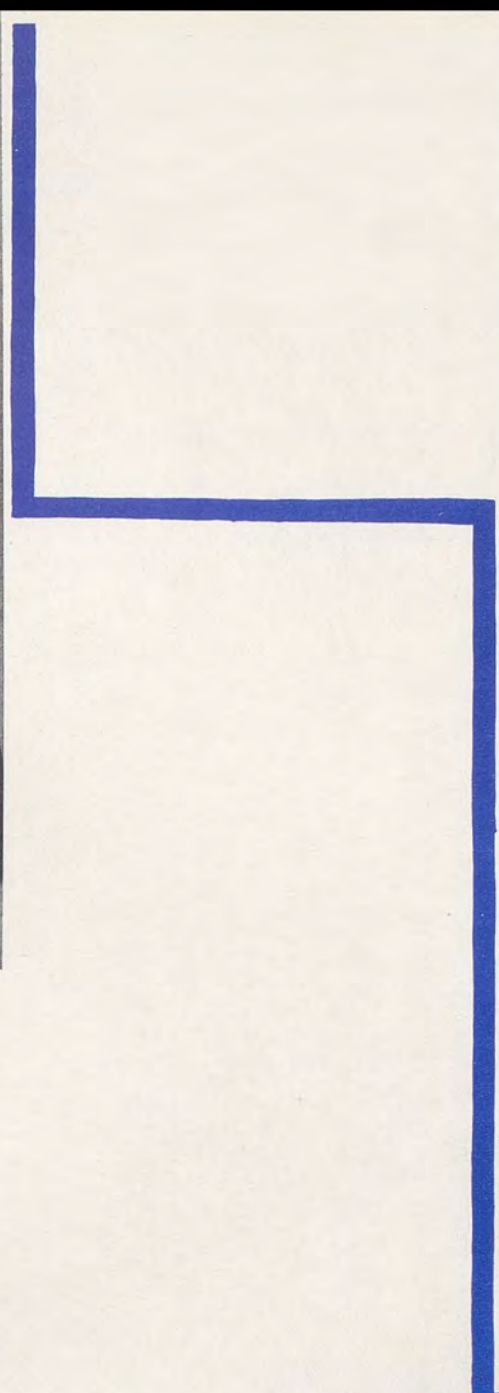
MOCK WEDDING—COPELAND, TIMM

DEEP THOUGHT—TOMLISON, DACRES
GRADWOHL, ELLSWORTH

DAY IS DONE FOR BOYLAN

Team







WHO'S TAKING PICTURES OF WHO? TEDDY DOLLE
 BIG BUSINESS "NOW, YOU PUT THIS THROUGH HERE."
 SHAKE A LEG, MISS CASEY. REMEMBER THOSE ZAINES? SOMEBODY'S FEEDIN' THEM A LINE.
 JITTERBUG EXTRA SPECIAL FACULTY FOOLIN!
 ART CLASS SMILE PRETTY FOR THE BIRDIE. CONFERENCE



1: The Deciding Point

2: Aint We got Fun.

3: Home Run.

4: Faculty Confab

5: Hold Tight.

6: Deck Tennis (?)



Row 1. Engel, Nelson, Wirth, Stewart, Gilliam, Stemmer, Merkle, Erdman, Turback, Manuel, Anhorn.
 Row 2. Stienback, Dull, Morehouse, Tanner, Swenson, Conkey, Eggers, Melton, Garrett, Davin, Chandler.
 Row 3. Plucker, Meinhart, Demory, Jackson, Stephens, Stoneman, Gillman, Cornell, Thomas, Franz, N. Smedes, H. Smedes, Franklin,

MELTON
 JACKSON
 DEMORY
 TANNER
 DULL ENGEL GARLAND
 TURBACK
 EGGERS
 MERKLE
 THOMAS

TO DO OR DIE FOR OLD WA-HI

The Wa-Hi football squad struggled through the 1941 season after taking several hard losses and chalking up two victories for themselves.

Functioning under the mentorship of Coach Armand Jeffs, the Imps poured their offensive power at all opponents from the famous "T" formation.

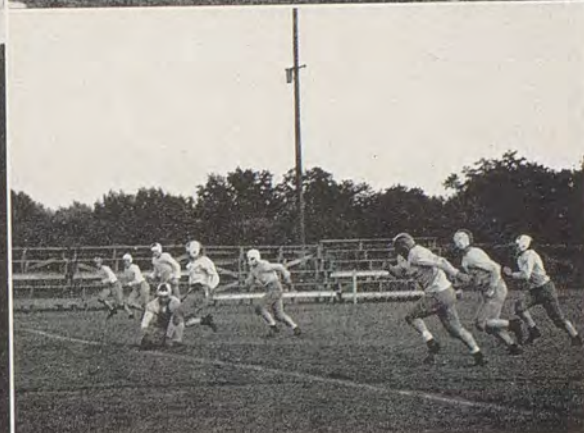
The Devils sank the invading Lewis and Clark aggregation on September 26 by a score of 26 to 14, while a week before they had broken even another Spokane visitor by the tie score of 6 to 6.

When the Stadium team from Tacoma came to Borleske field to battle the light Blue Devil team, probably the most thrilling game of the season occurred. Playing in a drenching rain the two squads fought evenly throughout the entire game, but the score stood at 8 to 7 against the Wa-Hi boys when the gun sounded.

On October 17 the boys in Blue and White journeyed to Dayton and met the Bulldogs on their home field. Featuring one of the strongest teams in the school's history, the small town grid men held the Wa-Hi runners in check and won a moral victory by emerging with a scoreless tie.

The worst beating handed the Imps during the season took place when the Blue Devils met the powerful Everett Seagulls' squad on the coast team's field. Led by Larry Hatch, the Seagulls piled up twenty points in the first half while the Imps went scoreless. In the second half the Wa-Hi squad gave all it had, but the Everett team garnered eight more points to gain a 28 to 0 victory.

The Wa-Hi grid men then met the Lincoln (Tacoma) team and again the Imps were unable to cross the goal line, as the Abes held them scoreless and chalked up 14 points to their own credit.



STEWART
 FRANKLIN
 STONEMAN
 GILLIAM
 CONKEY MEINHART ERDMAN FRANZ
 WIRTH
 MOREHOUSE
 LANGE
 STEPHENS

The season's record is as follows:

Sept. 13*	Mac Hi	18	Wa-Hi	7
Sept. 20*	North Central	6	Wa-Hi	6
Sept. 26*	Lewis and Clark	14	Wa-Hi	26
Oct. 3*	Stadium	8	Wa-Hi	7
Oct. 17	Everett	28	Wa-Hi	0
Oct. 24	Dayton	0	Wa-Hi	0
Oct. 31	Lincoln (Taoma)	14	Wa-Hi	0
Nov. 11*	Lewiston	6	Wa-Hi	14
Nov. 20	Yakima	19	Wa-Hi	7

* Home Games

The Jeffmen finally crashed into the win column again when they presented the visiting Lewiston Bengals with a 14 to 6 beating. The "T" formation that the Imps applied seemed to baffle the larger Idaho aggregation, and the Lewiston offense had little effect on the stonewall defense that the Imp linemen provided.

For their final conflict the Blue Devils traveled to Yakima for the annual Thanksgiving Day battle. The Pirates took them in to camp by a score of 19 to 7, but not until the Wa-Hi boys had given every ounce of effort that they could offer. Led by "King" Brady, the Yakima squad battered the forward wall of the Blue and White and crossed into pay dirt three times. The Devils managed to cross the goal line twice, but one was nullified by an off-side penalty.

Three times the Wa-Hi squad marched to within five yards of the goal line, only to be stopped cold by the Pirates' line defense.

The Wa-Hi boys took a vote at the beginning of the season and elected Eldon Engel and Elmer Erdman to lead the squad as acting co-captains.

Erdman, a halfback, and Engel, center, earned themselves credit in the 1941 season. Engel missed only five plays all season and carried the brunt of the line's defensive play.

Jim Meinhart, giant tackle, was given the honor as an official All-State Cross League tackle. Jim played his final year under the Blue and White, having earned his letter in his Junior year.

In the backfield Erdman, Jack Melton, Paul Garland and Carlton Conkey did most of the ball carrying in the Imp offense. Garland turned in several brilliant performances before he received an injury in the Dayton game and viewed the season's remaining games from the stands. Phil Franklin's defensive play in the end position was outstanding.



A SQUAD
 Row 1. Eggers, Fouts, Dacres, Stoneman, Turley, Henderson.
 Row 2. Dixon, Henderson, Beck, Leeper, Portch Marr, Jeffs.

B SQUAD
 Row 1. Cecil, Nightingale, Mitchell, Stephens, Hall, Aiton.
 Row 2. Benefel, Hess, Chase, Piersall, Berry, Killingsworth.

FOUTS
 HENDERSON
 DACRES

STONEMAN
 PORTCH
 G. HENDERSON

DRIBBLE AND SHOOT

After the football togs were put away, Wa-Hi basketeers swung into the 1941-42 season; Although the percentage of games won was lower than that of recent years, the fighting spirit and drive were as great as shown by any team in Blue and White basketball history.

Wa-Hi withdrew partially from the Cross State League, and therefore played only a portion of the usual number of league games. The Imps gained two victories in league play.

A three-game trip to the western part of the state resulted in one win and two losses for the Blue Devils. They defeated the new league members, Seattle Prep, by a score of 33 to 32.

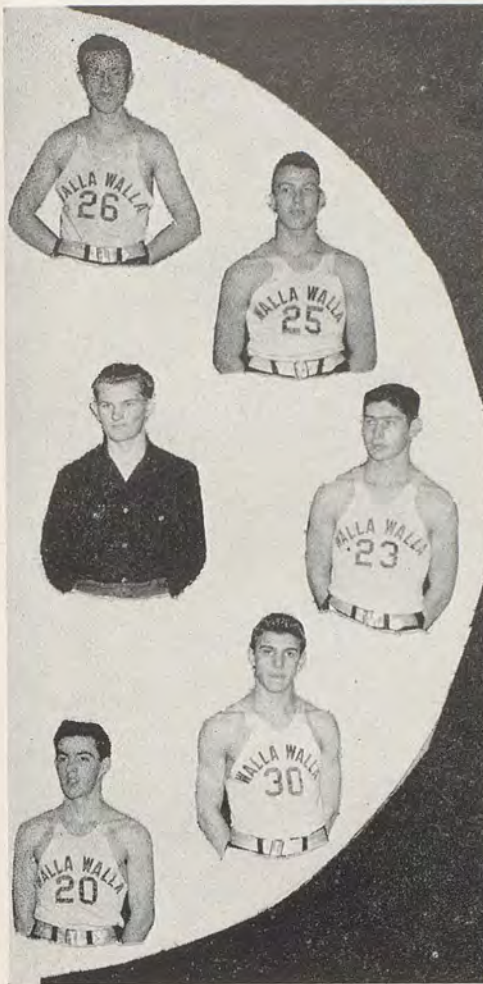
Trailing by one point, they pulled the game out of the fire by tipping in a rebound in the final seconds of play. In the other two matches the Imps lost badly to Lincoln (Tacoma) and Everett.

Probably the most exciting contest of the year developed when Wa-Ri and Stadium met on the Walla Walla floor. The game started as a nip-and-tuck affair with neither team able to gain much of an advantage until late in the third quarter. By the end of this quarter Stadium had picked up a 13 point lead. A strong and substantial rally in the final quarter, however, gave the Blue Devils a 39 to 34 victory.

A smooth-working five from Moscow, Idaho thrilled local fans with their clock-like floor play in a two-game series here during the winter. Wa-Hi wn the first of the contest, 55 to 46, and Moscow won the second, 48 to 28. In a game played at Moscow earlier in the season, Wa-Hi took a 42 to 40 decision.

The Lewiston Bengals bowed twice to the Indigo Imps, 49 to 28 at Lewiston and 30 to 20 at Walla Walla. A misunderstanding in dates between the two schools resulted in an unusual circumstance. One of the best crowds of the season had gathered in the Wa-Hi gym to watch a game with Lewiston. Came game time and no Lewiston team appeared. A long distance call revealed that a sizable crowd had also gathered in Lewiston prepared for Wa-Hi's appearance. The game was played at a later date.

The Yakima Pirates gained revenge for last year's two defeats at the hands of the Blue



TURLEY
 DIXON EGGERS LEEPER
 MARR BECK



C SQUAD

Row 1. Lindelein, May.
 Row 2. Lalumondier, Leroux, Roseboro, Thompson, Gilliam, Plucker, Noble, Darsch
 Row 3. Barclay, Hiese, Pope, Quinn, Rifer, Miller, Cochran.

and White basketeers by setting back the Imps twice this year, 25 to 13 there and 53 to 46 here. The Mac-Hi series was the usual pair of bitterly contested games with each team winning its home game. Wa.-Hi's advantage was 25 to 23, and Mac-Hi's was 25 to 21.

The Imps split a pair of games with the Baker Quintet, a new opponent this year. Baker won at home, 44 to 32 by virtue of an exhibition of some of their famed dead-eye shooting. Wa-Hi did some dead-eyeing of its own to win here, 32 to 26.

After the close of the regular season, the Wa-Hi team journeyed to Spokane to participate in a playoff for a berth in the State Basketball Tournament. After losing their first contest to north Central by 38 to 35, they won from the Gonzaga squad, 26 to 27. In the third game the Imps again met the North Central boys and again went down, 39 to 31, to make this year's team the first in many years to fail to enter the state meet at Seattle.

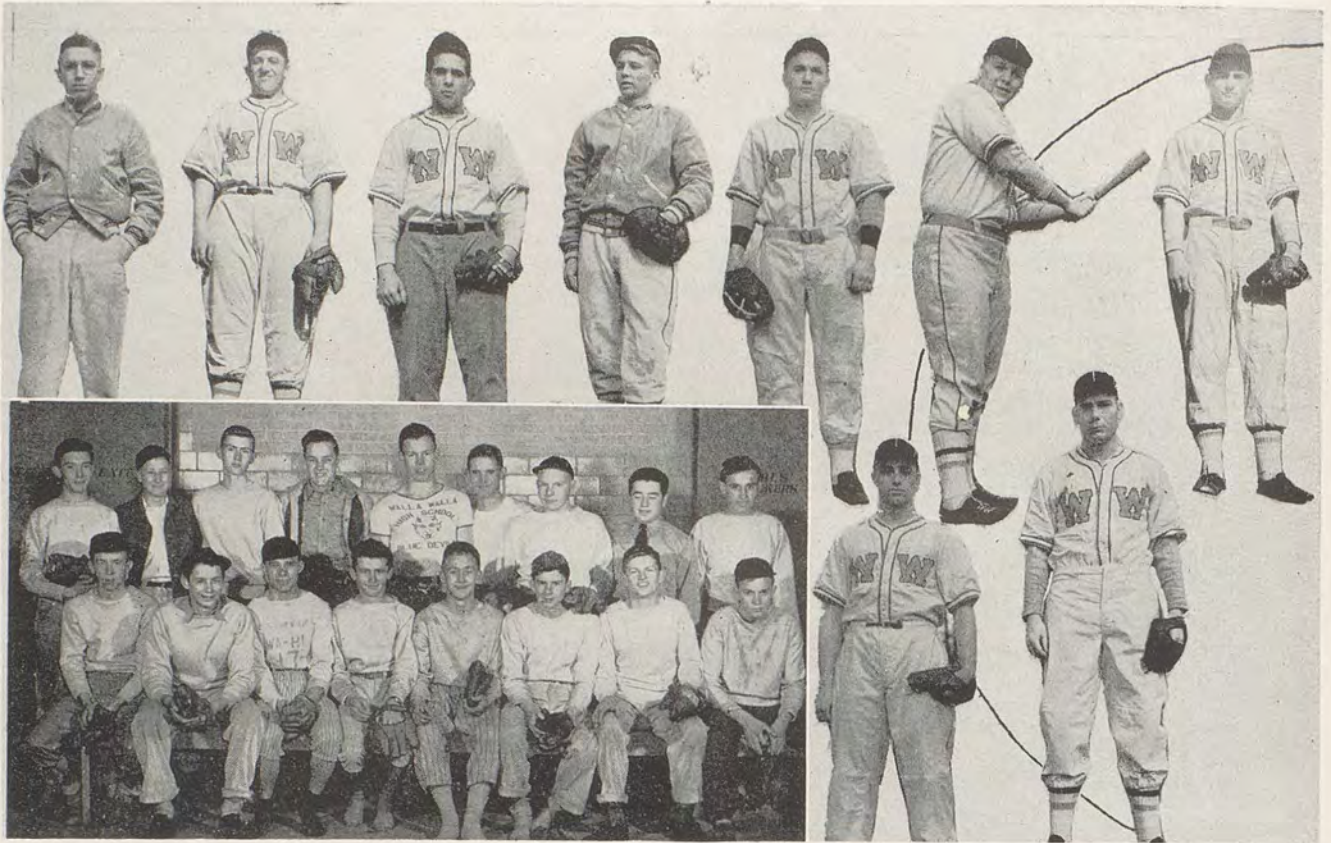
Chief scoring threat of the aggregation was composed of Bill Fouts, Pete Dacres and Les Stoneman. Although Wa-Hi played several fewer games than did the other members of the league, Fouts finished third in Cross-State League scoring and had an average of 15 points per game. Besides forwards Fouts and Stoneman and center Dacres, the first five included guards Glenn Henderson and Bob Marr who handled their defense duties in excellent style as well as scoring frequently.

The freshman squad, playing an 18-game schedule, came through the 1941-42 season with 17 wins and only one loss. They were handed their lone defeat, a two-point affair, by the St. Pat's "B" squad after the little Imps had won from Umapine the night before.

The Frosh laced St. Pat's three times and won twice each from squads representing Mac-Hi, Waitsburg, Pomeroy, Umapine, Helix and Weston. They earned single victories over Dayton and Columbia.

The starting lineup included Stanley Roseboro and Burton Thompson, forwards; Joe Gilliam, center; and Kenny Noble and Robert Plucker, guards. Other members who contributed to the team's success were Bob Leroux, Bob Miller, Glen Cochran, Ronald Duckworth, John Heath, Jack Rifer, Joe Darsch, Eugene Pope, Francis May and Doran Lindelein.

Ralph Emigh coached the freshmen squad through the past highly successful season.



B SQUAD

Row 1. K. Maxson, Garrett, Jordan, Myers, Follett, Maiden, Parsons, Turner.
 Row 2. Fondahn, Robison, Miller, Stephens, Fisher, Klicker, Boule, Page.

INDIVIDUALS: Backlund, manager, Criscola, Loney, Hansen, Stone, Meinhart, Spohn, Fouts, Defory.

WHEN BAT MEETS BALL—1941 REVIEW

The Blue Devil baseball team of which Dick Clark and Paul Garland were co-captains, had a record of twelve victories and seven defeats. The boys won two games from Dayton; edged Nampa, Idaho, in a five-game series, three to two; won three of four games with Lewiston, and four of five with Yakima; and lost twice to the W. S. C. freshmen.

At Tacoma, in a play-off for the Cross State League championship, Lincoln high school defeated Wa-Hi, 4-0.

Personnel of the 1941 squad included Dick Clarke and Bill Haines, catchers, Paul Garland, Wes Shaw, Bob Spohn and Sherman Mitchell, pitchers. Junior Stone Harold Dyer, Bill Fouts, Jake Klicker and Frankie Garrett were infielders; and Albert Turley, Lee Coultas, Bob Demory, Jim Meinhart and Ardell McBride roamed the outfield.

1942 REVIEW

Gone from the squad this year are Dick Clarke, Paul Garland, Wes Shaw, Harold Dyer, Jake Klicker and Lee Coultas.

Catcher Bill Haines and pitchers Bob Spohn, Sherman Mitchell, and Ardell



McBride, Stemmer, Klicker Haines, Mitchell,
Turley Sherwood, Garrett

FROSH SQUAD—

- Row 1. May, McInturff, Pope, Cunnington,
Frank, Barclay, Leidl.
Row 2. Jacobus, Woods, Lalumondier, Pluc-
ker, Mitchell, Benfield.

McBride are all lettermen. Haines and Spohn are the seniors of this group.

Lettermen available for the infield include Junior Stone, Frankie Garrett and Bill Fouts. Albert Turley, Bob Demory and Jim Meinhart, outfielders are also lettermen.

New to the team this year are Bill Loney, pitcher, a transfer from Enterprise, Oregon; Richard Klicker, Paul Criscola and Eugene Sherwood, infielders, up from the 1941 Bees; and Paul Stemmer, outfielder, also from last year's Bees.

The 1941 frosh squad is regarded as the strongest to represent Wa-Hi since baseball was revived here in 1938. The squad is well balanced with good pitching, strong-armed infielders and at least fair hitters in every position.

Scores to date (press time) indicate the strength of the current aggregation. They are:

Wa-Hi.....	8.....	Gonzaga.....	0	Wa-Hi 13	Dayton 3
Wa-Hi.....	4.....	Gonzaga.....	1	Wa-Hi 14	Yakima 3
Wa-Hi.....	14.....	Dayton.....	3	Wa-Hi 2	Yakima 8
Wa-Hi.....	8.....	Everett.....	3	Wa-Hi 7	" 2
Wa-Hi.....	21.....	Everett.....	6	Wa-Hi 1	Lewiston 0
Wa-Hi.....	8.....	Everett.....	4	Wa-Hi 1	Lewiston 2

Sweeping the three-game series with Everett has been the highlight of the season this far.

Yet to be played this spring are five games with Yakima, five with Lewiston, one with Dayton and whatever game Wa-Hi draws in the Cross-State League playoffs in Tacoma, May 29 and 30.

Batting order of the 1942 team: Stone, 1b., Garrett, 2b., McBride, p or cf., Fouts ss., Turley lf., Meinhart, rf., Criscola, 3b., Haines, c., Mitchell, p. or Demory, cf.

Won 15
Lost 4

Cross-State
Champs

Play-off at Col W May 29-30 1942

Wa-Hi 0	Bellingham 5
Wa-Hi 4	" 3
Wa-Hi 7	" 3



TRACK SQUAD

First row: Darsch, Appling, Williams, O'dell, Shindo, Rehberg, Dickey, Noble.
 Second row: Mr. Jacky, Cornell, Dodd, Kibler, Steinbeck, Jack Gilliam, Floyd Gilliam, Joe Gilliam, Morehouse.
 Third row: Anhorn, Hastings, Smedes, Michaelis, Buck, Freeman, Stockham.



BOXING SQUAD

First row: Haas, D. Zier, Boylan, Frank, V. Zier, T. Maccarroni, Charlo.
 Second row: Turbak, Wirth, Van Atta, Sporleder, Steinbeck, Robinson, Schaefer, S. Maccarrone.



WRESTLING SQUAD

Bischoff, Bishop, Darsch, Jackson, Shindo, Wirth, Parsons.

THEY GO AROUND AND AROUND

Boys turning out for track in 1942 were given a goal at which to aim by the 1941 team who took the individual team championship at the state interscholastic track meet at Pullman wrestling teams' participation this year.

The track team is coached by Lawrence Jacky, Athletic director at Wa-Hi.

Boys who have shown well so far this spring include Carlton Conkey and Neil Dickey in the sprints, Pete Dacres in hurdle races, John Stephens in the broad jump, Jack Gilliam in the mile and Joe Gilliam in the 880. Merlin Morehouse has also won points in running events.

Bill Steinbeck and Clayton Cornell are expected to develop into consistent point-getters in weight events before the close of the season. Norman Smedes, second in the state in the javelin last year, has been handicapped by an injured foot this year.

BLOODY BATTLERS

The boxing squad began the season in an auspicious manner by defeating the Spokane Y.M.C.A. by a 4 to 2 count.

Sickness among the squad members caused the Blue Devils to drop many smokers that they probably could have won had the entire squad been in top condition. As it was, they won two and lost five.

In addition to the Spokane club, they defeated Dayton 8 to 4. They lost once to Dayton 4 to 6, twice to Pomeroy, 3 to 4 and 4 to 5; and twice to Clarkston, 3 to 6 and 2 to 7.

Of the six boxers who went to the district meet at Asotin, Bob Sporleder, Richard, Schaefer and Bill Steinbeck won championships in the 127, 140 and heavyweight classes, respectively. Two others placed second, and the sixth was eliminated.

GRUNT AND GROANERS

The cancellation of the state meet and the inability to find competition prevented the last spring.

ATHLETIC AWARD WINNERS FOR 1941-42

FOOTBALL

Third Year Awards—

Jack Melton
Paul Garland

Second Year Awards—

Eldon Engel
Jim Meinhart
Richard Jackson
Elmer Erdman
Carlton Conkey
Phil Franklin

First Year Awards—

Jim Merkle
Aime Davin
Myles Wirth
Merlin Morehouse
Bob Demory
John Stephens
Dick Turbak
Bill Steinbeck
Dean Eggers

BASKETBALL

Third Year Award—

Bill Fouts

Second Year Awards—

Pete Dacres
Glenn Henderson

First Year Awards—

Leslie Stoneman
Dean Eggers
Bob Marr
Bill Portch
Albert Turley
Willard Leeper
John Stephens

BOXING

Third Year Awards—

Bill Sporleder, 124, two times
State Champion
Bill Steinbeck, Heavyweight,
District Champion.

Second Year Awards—

Del Zier, 130
Vernon Zier, 105

First Year Awards—

Frank Turner, 120
Dick Schaefer, 140
District Champion
Dick Turbak, 150
Ted Audette, 149
Myles Wirth, 150
Sal Maccarone, 133
Louie Charlo, 118
Bill Van Atta, 135

TRACK

Fourth Year Award—

Carlton Conkey

Second Year Awards—

Jack Gilliam
Norman Smedes
Leslie Kibler
Floyd Gilliam
Melvin Page
Merlin Morehouse
Lloyd Hill

First Year Awards—

Bill Steinbeck
Kenny Noble
Joe Gilliam
Bob Hall
John Stephens
Clayton Cornell

BASBALL

Fourth Year Award—

Bill Fouts

Third Year Awards—

Junior Stone
Bob Spohn

Second Year Awards—

Bill Haines
Ardell McBride
Bob Demory
Jim Meinhart
Frank Garrett
Albert Turley
Sherman Mitchell

First Year Awards—

Paul Criscola
Arnold Hansen
Bill Loney
Eugene Sherwood
Richard Klicker
Bob Klicker

TENNIS

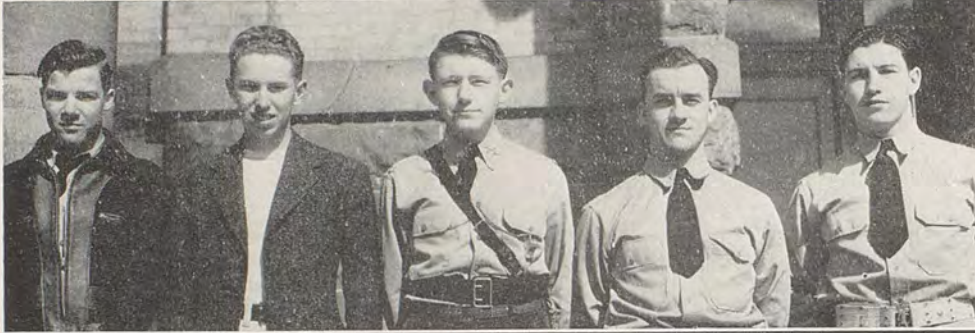
Third Year Awards—

Bill Portch
Leslie Stoneman
Eugene Heric



TENNIS

Row 1. Ledgerwood, Dunn, Nieman, Harvey, Waldron, Cation, Kimmerly.
Row 2. Miller, Nightingale, Stoneman, Portch.



FOOTBALL CHAMPS

Gehrett, Dodd, Miller, Lawrence, Bischoff.



VOLLEYBALL CHAMPS

Row 1. Dixon, Zier, Farmer.
Row 2. Ellsworth, Henderson.

THEY HAVE A RACKET

Wielders of the racket, both boys and girls, play for Wa-Hi under the supervision of Mr. Reed. Until the present time, the boys' squad has defeated Hermiston three matches to two.

At Pasco, the boys won three of five matches, and the girls won three of four.

Matches remaining on the 1942 schedule include a meeting with Pendleton there and return engagements in Walla Walla with Hermiston, Pasco and Pendleton. Tentative plans call for the scheduling of matches here later in the spring with Pomeroy and Salem.

Elaine Harvey, Louise Dunn, Lois Waldron, Elaine Cation, Mary Ledgerwood, Lorraine Maughan and Mary Lou Kimmerly compose the girls' squad.

The boys' squad includes Leslie Stoneman, Bill Portch, Eugene Heric, Melvin Carle and Richard Nightingale.

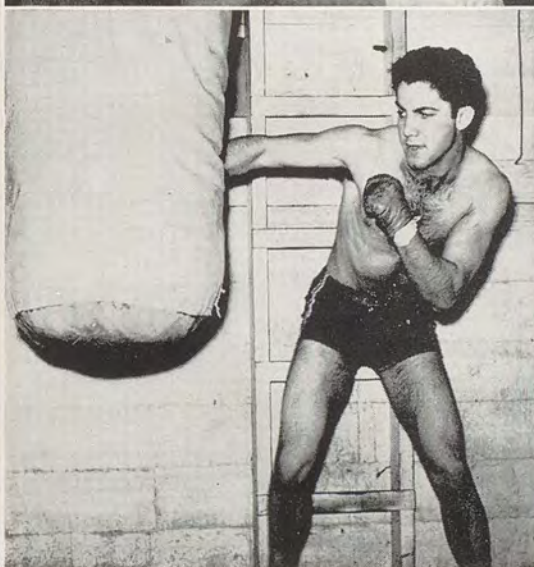
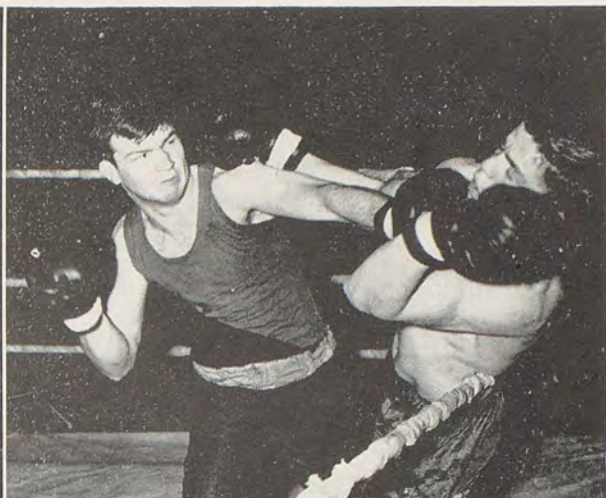
INTRAMURAL CONTESTS FURNISH EXCITING ENCOUNTERS

Name your sport—whether it be checkers or football, it's probably played by the teams in Wa-Hi's intramural league. Eight teams make up the league. They carry such fancy names as Aces, Blitkriegs, Daredevils, Eagles, Golden Bears, Panthers, Redskins and Tigers.

To determine team standings, the intramural organization, under Mr. Lobaugh's direction, worked out a scoring system allowing 50 points for such major sports as require team participation. Of these, first place gets 20 points; second, 15; third, 10; and fourth, 5 points.

For those sports involving participation of a few individuals for each team, 26 points were allotted with the distribution for the four places, 12, 8, 4, and 2. Single-competitor sports received an allotment of 13 points.

At the time this is written, the Tigers are leading the league with 59½ points. The Aces are in second place with 49; the Redskins third with 40 and the Eagles, fourth with 30.



Upper Left: Van Atta lands.

Upper Right: Wirth can take it.

Middle Left: Board of strategy.

Middle Right: Easy—if you know how.

Lower Left: Guglielmelli works out.

Lower Right: Must be a slow game.



BASKETBALL CHAMPS

Row 1. Long, Ward
Swanson, Rich.
Row 2. Hill, Crunch,
Butler, Flaherty, Griffin.



VOLLEYBALL CHAMPS

Row 1. Fanning Stebner.
Row 2. Beeson, Fleck.
Row 3. Hill, Wright,
Day.



LETTER WINNERS

Wirth, Waldron, Barney
Barton.

THE GIRLS KEEP FIT

Reports from the girls' gymnasium rate the 1941-42 season as a most interesting one in girls' sports. The girls' program concerns itself largely with intramural contests in volleyball, basketball, baseball, tennis, badminton and ping pong.

Girls of the two lower classes have the edge thus far in the current year's program. Homeroom 57, composed of sophomores, won the volleyball tournament, and the freshmen of homeroom 106, after a red-hot contest with the sophomores of homeroom 319, led the field in the basketball tournament. For this achievement the girls of 106 received the honor of having the name of their homeroom engraved on the championship plaque, and have possession of the plaque until it is won by a new champion.

Badminton and ping pong contests have not as yet progressed to the final stage. Helen Coyle seems to be the present favorite to win in badminton and Louise Dunn leads in ping pong.

The baseball tournament has not yet begun.

All tournaments thus far have been played on schedule, and have created more than usual interest among the girls.

Girls' sports letters this year are the reverse of what they have been previously. The traditional white background has been changed to blue. This year has produced an unusual number of letter winners.

Movie Operators—
 Row 1. McIntyre, Terhaar,
 Thomsen.
 Row 2. Kramer, Johnson,
 Wendt, Garrett.



Senior Play Comm.—
 Row 1. Zahl, Harris, Jones,
 Maughan, Reynolds.
 Row 2. Nieman, Yeend, Choes-
 sler.



THEY ALSO SERVE

LIBRARY ASSISTANTS

Norma Anspauch
 Therese Austin
 Anna Bereth
 Angelina Biagi
 Minnie Blaylock
 Delores Cunningham
 Irma Danielson
 Angelina Elia
 Violet Gilman
 Don Miller
 Betty Rink
 Oda Lee Rounsaville
 Eleanor Stokes
 Bessie Yarnell

OFFICE HELPERS

Eva Arbin
 Lorraine Gardner
 Roscella Gillett
 Elaine Chase
 Shirley Davis
 Wally Longmire
 Ray Jacobus
 Eleanor Stokes

RADIO TECHNICIANS

Russell Harrison
 Jack King

STAGE MANAGER

Art Schoessler

Acknowledgments

PRINTING, BINDING AND LITHOGRAPHY

Inland Printing Co., Walla Walla

ENGRAVING

Western Engraving and Colortype Co., Seattle

PHOTOGRAPHY

Vitart Studio, Walla Walla

COVERS

Babcock Cover Co., Los Angeles

S. K. Smith Co., Chicago

ART WORK

Dorothy Robinson

